



DNA-cytometric grading of prostate cancer systematic review with descriptive data analysis

Alfred Böcking^{1*}, Maurits Tils¹, Martin Schramm¹, Josef Dietz² and Stefan Biesterfeld¹

*Correspondence: alfred.boecking@web.de



CrossMark

← Click for updates

¹Institute of Cytopathology, University of Düsseldorf, Germany.

²Landesverband Baden Württemberg im Bundesverband Prostatakrebs Selbsthilfe, Germany.

Abstract

Gleason-score ≤ 6 , assessed on core needle biopsies, is an essential prognostic parameter to offer the strategy of Active Surveillance (AS) to patients with locally confined cancers of the prostate. Yet, its interobserver reproducibility is low (48-70%) and its prognostic validity unsatisfactory. An option to complementary assess the malignant potential of these cancers are objective DNA-ploidy-measurements on existing biopsies. For that purpose chromosomal heterogeneity is indirectly quantified by DNA-cytometry resulting in DNA-grades of malignancy 1-4. This review systematically trawls and evaluates all scientific publications on the potential diagnostic and prognostic validity and the heterogeneity of DNA-ploidy measurements in cancers of the prostate between 1966 and 2013. Publications have been classified into Oxford levels of evidence and levels of significance were given for the correlation of DNA-ploidy with different clinical outcomes. 114 scientific articles had to be excluded because of different methodological reasons. All but one of the 67 methodologically acceptable articles report on a significant diagnostic resp. prognostic significance of DNA ploidy measurements in cancers of the prostate. 8 level 1b studies report that DNA-ploidy, assessed on punch biopsies independently predicts organ confinement as assessed after radical prostatectomy. 18 level 2b studies prove that DNA-ploidy measurements add statistically significant information to the Gleason-score. 16 level 2b investigations report a significant correlation of DNA-ploidy with recurrence-free survival. 15 level 2b studies document a significant correlation with overall survival after different types of therapy. 5 level 2b investigations prove a significant correlation with local recurrence or progress after radical prostatectomy. 3 level 2b publications show a significant correlation of DNA-ploidy with the occurrence of lymph node- or bone metastases after radical prostatectomy. 1 level 2b study documents the additional prognostic value of DNA-ploidy measurements over conventional subjective grading in prostate cancer patients under AS. All existing 15 narrative reviews on selected articles dealing with prognostic DNA-cytometry in cancers of the prostate are in favor of this method. Prospective level 1b studies, especially those proving the validity of DNA ploidy measurements to predict non-progression in patients with clinically insignificant low-grade low stage cancers of the prostate eligible for Active Surveillance additionally to the Gleason-score are still missing.

Keywords: DNA-cytometry, DNA-ploidy, DNA-grading, prostate cancer, Gleason-score, active surveillance, brachytherapy, prognosis

Introduction

Epidemiology

Mean age of patients facing the diagnosis of prostate cancer in Germany currently is 70 years. 26.1% of all newly diagnosed malignancies among men are cancers of the prostate. Its incidence has risen from 80 in 1993 to 111.4/100,000 men or 65,830

new cases in 2010. 70,100 new cases are prognosticated for 2014. Nevertheless mortality is constantly decreasing, from 30 in 1993 to 20.0/100,000 men in 2010 [1]. Even lethality is low: 11.7% in the USA in 2006 as compared to other cancers [2]. The favorable five-years survival rate of 93% is mainly due to more frequent early diagnoses as a consequence of PSA-testing [1].

As about 30% of patients who, according to inquest died from prostate cancer, in fact did not according to autopsy [3], the true mortality rates may be significantly lower.

Therapy

Adequate therapy of prostate cancers essentially depends on their individual histological type, stage and grade of malignancy. High grades are associated with early and rapid tumor progression and subsequent metastasis. Low grade and low stage cancers may either locally be treated with curative intention (e.g., by radical prostatectomy, external or internal radiation) or subjected to an Active Surveillance (AS) strategy. Different to "Watchful Waiting", this includes the option for curative therapy if the cancer progresses. About 53% of all newly diagnosed patients with cancers of the prostate in Germany are currently treated by radical prostatectomy, 8% hormonally, 6% by a combination of both, 12% by radiation, 14% by AS and 5% by Watchful Waiting [4].

As the probability of patients with "clinically insignificant microcarcinomas" of the prostate [5] to die from their cancer is very low: 89% overall survival after 8 years [6], 81% overall survival after 10 years [7], the strategy of AS has been designed. About 45% of all screening-detected cancers can be managed with AS [7]. In Germany this strategy is recommended to patients with low-grade Gleason-score(GS) \leq 6 and low stage (T1c and T2a) cancers, found in \leq 2 core biopsies with $<$ 50% of their volume and a PSA $<$ 10 ng/ml. It comprises regular urological examinations, repeated biopsies and PSA-controls but still allows curative therapy if clinical signs of progression can be detected [8].

Shortcomings of Gleason-grading

Grading the malignant potential of individual cancers of the prostate currently is performed according to the modified Gleason-score according to the International Society for Urologic Pathology (ISUP) [9] on histological sections of biopsies or resected tissue.

Grading the malignant potential of cancers should be reproducible among different pathologists, representative for the tumor as a whole and, most importantly, prognostically valid. Grading the malignancy of cancers of the prostate should predict outcome of patients even after different types of therapy. Neither the original [10] nor the revised GS [9] reveal sufficient inter-observer reproducibility to rely clinical decisions of the significance of radical prostatectomy vs. AS on this subjective prognostic index only. [11] report a reproducibility of 58-69%, [12] of 48%, [13] of 70% and [14] of 47% for the revised score.

The main cause for the revision of the Gleason-system by the International Society for Urologic Pathology (ISUP) was to enhance its representativity on punch biopsies for the tumor as a whole (as observed in radical prostatectomies). Yet, contrary to what was expected, [15] found an agreement of only 72%.

Two groups furthermore demonstrated that the revised Gleason-grading could neither differentiate the survival of score 7a- and 7b- [16] or GS \leq 6- and GS7-patients after radical prostatectomy [17].

Prognostic DNA-cytometry

Cancers of the prostate, as all other cancers [18] reveal quite different types of chromosomal aneuploidy [19,20]. While malignant tumors progress, their chromosomal sets may become more and more variable, caused by genetic instability [20,21-23]. The resulting "chromosomal chaos" [24,25] can be indirectly quantified by measuring the DNA-content of hundreds to thousands of cancer cells. These methods are called DNA-flow-cytometry [26,27], respectively DNA-image-cytometry [28-34].

It is based on measurements of the Integrated Optical Density (IOD) of stoichiometrically and specifically DNA-stained nuclei and internal calibration with normal, diploid reference cells. Measurements of nuclei under UV-light, previously stained with DNA-specific fluorescent dyes, like DAPI, in liquids flowing through a capillary are called "DNA Flow Cytometry". Its disadvantage is that the cells are lost after analysis, thus control measurements are not possible. Furthermore cancer cells cannot be differentiated from non-epithelial cells without additional immunocytochemical markers. Measurements on Feulgen-stained nuclei [35] on glass slides, using TV-image-analysis systems are called "DNA Image Cytometry". It has the advantage that it can repeatedly be performed on prestained and specifically restrained slides on individually preclassified cells. Its performance has been highly standardized by a task force of the European Society for Analytical Cellular Pathology, ESACP [30,32-34]. For the purpose of grading the malignant potential of selected solid tumors, four grades of increasing malignancy have been agreed upon: peridiploid (grade 1), peritetraploid (grade 2), x-ploid (grade 3) and multiploid (grade 4) (Table 1 and Figure 1).

Interobserver reproducibility of prognostic DNA-histogram interpretations of prostate cancer biopsies has been reported to be 93.0% and 90.2% [36,37].

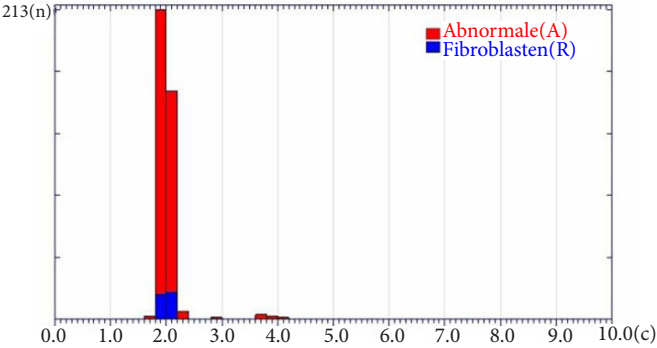
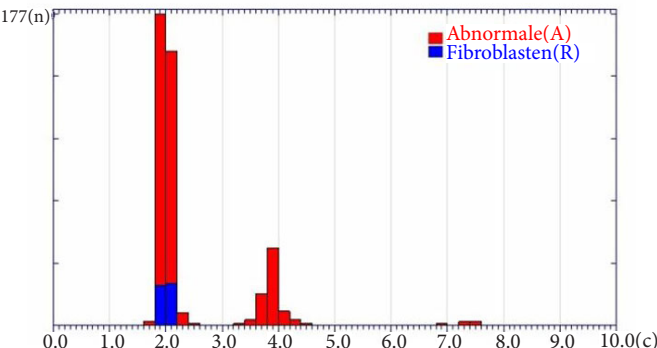
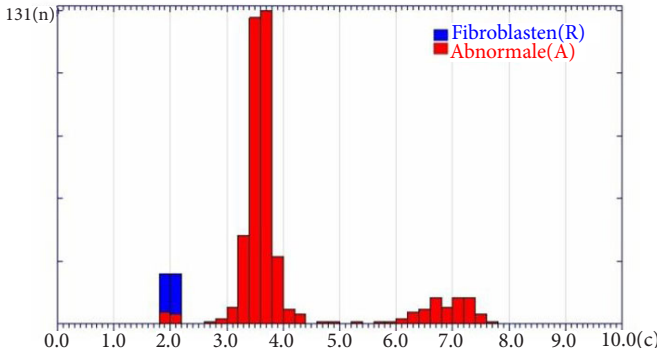
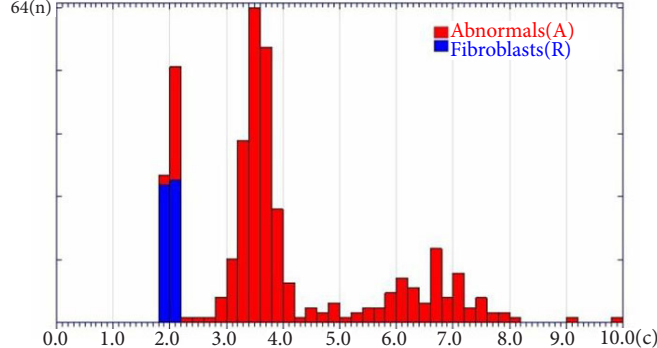
Existing reviews

14 narrative reviews have so far addressed diagnostic or prog-

Table 1. Algorithms for DNA-grading prostate cancer malignancy in four groups (Haroske et al., 1998, 2001).

DNA-grade	Definition
1 (Peridiploid, Type A)	One stemline at $2c \pm 10\%$
2 (Peritetraploid, Type B)	One stemline at $2c \pm 10\%$, second stemline at $4c \pm 10\%$
3 (X-ploid, Type C)	One additional stemline outside 1, $8c-2$, $2c$ or 3 , $6c-4$, $4c \pm 10\%$
4 (Multiploid, Type D)	More than one stemline outside 1, $8c-2$, $2c$ or 3 , $6c-4$, $4c \pm 10\%$

Figure 1. Typical DNA-histograms, corresponding Gleason-scores and tentative prognosis. Frequencies* from [37], prognostic DNA-categories according to [41], 2001.

Typical DNA-histogram	DNA-grade vs. Gleason-Score	Prognosis Therapy Frequency
<p style="text-align: center;">DNA-histogram [C]fur 1931-10</p> 	<p>Peridiploid Type A DNA-grade 1 Corresponds about to GS <=6</p>	<p>Very good Active surveillance in locally confined carcinomas In ca. 55% of punch biopsies*</p>
<p style="text-align: center;">DNA-histogram [C]fur 1548-10</p> 	<p>Peritetraploid Type B DNA-grade 2 Corresponds about to GS 7</p>	<p>Still good For elder patients similar as in grade 1 In ca. 26% of punch-biopsies*</p>
<p style="text-align: center;">DNA-histogram [C]fur 10247b-09</p> 	<p>X-ploid Type C DNA-grade 3 Corresponds about to GS 8</p>	<p>Not so good Treatment acc. to S3-guidelines In ca. 10% of punch-biopsies*</p>
<p style="text-align: center;">DNA-histogram [C]fur 3554-09</p> 	<p>Multiploid Type D DNA-grade 4 Corresponds about to GS 9&10</p>	<p>Not good Treatment acc. to S3-guidelines In ca. 9% of punch-biopsies*</p>

nostic DNA-cytometry in cancers of the prostate between 1992 and 2006 [38-51] Table 2. They have reviewed between 2 and 36 publications, mean 12,8. Two of them dealt with DNA-flow cytometry only [30,46]. Besides [46], who did not validate their findings, all of them concluded that this method is of diagnostic or prognostic relevance:

- “Ploidy predicts prognosis significantly” [38].
- “Ploidy looks promising following radical prostatectomy” [39].
- “DNA-ploidy is a CAP (College of American Pathologists) category II method” [40].

- “Ploidy predicts prognosis independently” [41].
- “Ploidy provides important prognostic information” [42].
- “Ploidy is a questionable independent variable” [43].
- “DNA-ploidy is a CAP category II method” [44].
- “DNA-ploidy has good potential as prognostic marker” [45].
- “It is difficult to understand why these well documented data have not yet gained access to treatment protocols” [46].
- “DNA-ploidy is of value in treatment decisions, particularly when surveillance is an option”. “DNA-ploidy should uniformly be studied in clinical trials, particularly in

Table 2. Reviews dealing with DNA-cytometry in prostate cancer.

Authors	Year	Publications reviewed	Systematic	Flow/Image cytometry	Methodological aspects	Prognostic significance	Comparison with other markers
Buhmeida et al., [38]	2006	14	No	FCM&ICM	Yes	“Predicts P significantly in organ confined disease”	Yes N=7
Montironi et al., [39]	2006	2	No	FCM	No	Not done	No
Epstein et al., [40]	2005	18	No	FCM&ICM	Yes	“Ploidy looks promising following RPE”	Yes N=16
Ross et al., [41]	2003	8	No	FCM&ICM	No	DNA-ploidy=CAP category II	Yes N=28
Chakravanti and Zhai et al., [42]	2003	8	No	FCM&ICM	No	Predicts P independently	Yes N=29
Mazzuchetti et al., [43]	2002	8	No	FCM&ICM	No	“Provides important prognostic information”	Yes N=1
Miller et al., [44]	2001	6	No	FCM&ICM	No	“Questionable independent variable”	Yes N=3
Bostwick et al., [45]	2000	5	No	FCM&ICM	No	DNA-ploidy =CAP category II	Yes N=6
Sakr and Grignon et al., [46]	1997	16	No	FCM&ICM	No	“Good potential as prognostic marker”	Yes N=3
Mikuz et al., [47]	1997	4	No	FCM&ICM	No	“Difficult to understand why these well documented data have not yet gained access to treatment protocols”.	No
Schröder et al., [48]	1994	36	No	FCM&ICM	Yes	WHO-consensus conference: “DNA-ploidy is of value in treatment decisions, particularly when surveillance is a treatment option“. “DNA-ploidy should uniformly be studied in clinical trials, particularly in patients with localized cancer”.	No
Shankey et al., [26]	1993	?	No	FCM	Yes	“Any sample shown to contain representative tumor can provide meaningful information”.	
Lieber et al., [49]	1992	12	No	FCM&ICM	No	“DNA-diploid tumors have a better prognosis than tumors of a similar stage and grade that are non-diploid”.	No
Deitch et al., [50]	1992	8	No	FCM	No	“FCM has much to tell us about the natural history and biologic behaviour of prostate cancer”.	No
Böcking et al., [51]	1992	34	No	FCM&ICM	Yes	“DNA-cytometry is a powerful tool for grading the malignant potential of prostatic carcinomas, superior to histological and cytological evaluation”.	No

patients with localized cancer" [47].

- "In retrospective studies ... any sample shown to contain representative tumor can provide meaningful information" [48].
- "DNA-diploid tumors have a better prognosis than tumors of a similar stage and grade that are non-diploid" [49].
- "Flow cytometry has much to tell us about the natural history and biologic behavior of prostate cancer" [50].
- "DNA-cytometry is a powerful tool for grading the malignant potential of prostatic carcinomas, superior to histological and cytological evaluation" [51].

As inclusion of patients with locally confined cancers of the prostate into the strategy of AS requires a valid prognostic assessment of individual tumors and the subjective Gleason-score suffers from low inter-observer reproducibility and insufficient prognostic validity, more reliable prognostic biomarkers are required. So far no systematic review exists on the prognostic validity of DNA-ploidy measurements, that have to be considered to supplement the Gleason-score on identical specimens. This study provides the first systematic review on that subject.

Review

Systematic review of the literature

A query has been performed in PubMed for publications between January 1966 [52] and August 19th, 2013 with the following key words: "prostate cancer and (DNA-ploidy or DNA-aneuploidy or DNA-cytometry or DNA-image-cytometry)". Studies were classified into different levels of evidence according to their design, applying the criteria of the Oxford Center for Evidence Based Medicine [53]:

- Level 1b, diagnosis: Validating cohort studies with good reference standards or clinical decision rule, tested within one clinical center.
- Level 2b, diagnosis: Exploratory cohort studies with good reference standard or clinical decision rule after derivation or validated on split samples or data bases.
- Level 1b, prognosis: Individual inception cohort studies with >80% follow-up or clinical decision rule, validated in a single population.
- Level 2b, prognosis: Retrospective cohort studies or follow-up of untreated control patients in a randomized controlled clinical trial. Derivation of a clinical decision rule or validated on split samples only.
- Level 3b, prognosis: Retrospective cohort studies with insufficiently defined inclusion criteria or less than 80% of follow-up.

A. B. has performed the review. No reports were excluded because of their status of publication. A systematic assessment of publication bias had not been performed.

The following features were considered as "good reference standards": For the correlation with diagnosis, the results of histological examination of radical prostatectomies, especially

concerning extracapsular spread and infiltration of seminal vesicles. For the correlation with prognosis, the recurrence-free- or overall survival time, the occurrence of lymph node- or bone metastases, clinical proof of local progression or recurrence or a so-called biochemical recurrence.

The *diagnostic accuracy* of specific indices of nuclear DNA distribution obtained on pretherapeutic biopsies, e.g., to render spread beyond the capsule more likely, should be compared with that of the Gleason-score in studies meeting the criteria of Oxford level of evidence 1b. Similarly the *prognostic validity* of indices of nuclear DNA-distribution should be investigated in comparison with the Gleason-Score, specific for different therapeutic settings, in Oxford level of evidence 1b studies.

Excluded papers

1.819 titles had been listed and 1 found through other sources. After exclusion of 40 duplicates and reading the respective abstracts, 1.573 records have been excluded and full texts of 207 publications that seemed to deal with the above mentioned subjects were ordered and reviewed (Figure 2). 114 of these have been excluded from further evaluation due to different types of methodological shortcomings [61-174].

- 32 revealed an inadequate study design: 10 comprised < 50 patients [54-63], 6 had a mixture of different types of therapy [64-69], 5 missed sufficient therapeutic information [70-74], 3 missed sufficient follow-up information [75-77], 4 applied an inadequate gold standard (digital rectal examination, cancer volume) [78-81], 2 selected prognostically extreme groups of patients [82,83], 1 comprised mixed tumor-stages [84], 1 presented no details on recurrence [85].
- 24 correlated DNA-ploidy with non-diagnostic or prognostic features: 5 with morphometry only [86-90], 4 with changes under therapy [91-94], 1 with effects of radiation [95], 2 with stage only [96,97], 2 with cytological grade [98,99], 2 with cancer diagnosis instead of prognosis [100,101], 2 with 5 α -reductase [102,103], 1 with PSA and Gleason-score [104], 1 with stage and cytological grade [105], 1 with Gleason-score and stage [106], 1 with histological subtype [107], 1 with stage and non Gleason-grade [108], 1 with steroid receptors [109].
- 25 dealt with methodological aspects of cytometry only [110-134].
- 14 applied an inadequate cytometric methodology: 8 an inadequate sampling of cells [135-142], 3 performed measurements on sections of different thickness [143-145], 1 applied an inadequate internal calibration [146], 1 missed information on cytometric method [147], 1 measured only 30 nuclei per specimen [52].
- 19 various reasons: 7 were not written in English language [148-154], 3 presented case reports [155-157], 2 dealt with rat prostate cancers [158,159], 2 presented no own data [160,161], 1 correlation of biopsy and radical prostatectomy [162], 1 was redundant with a previous

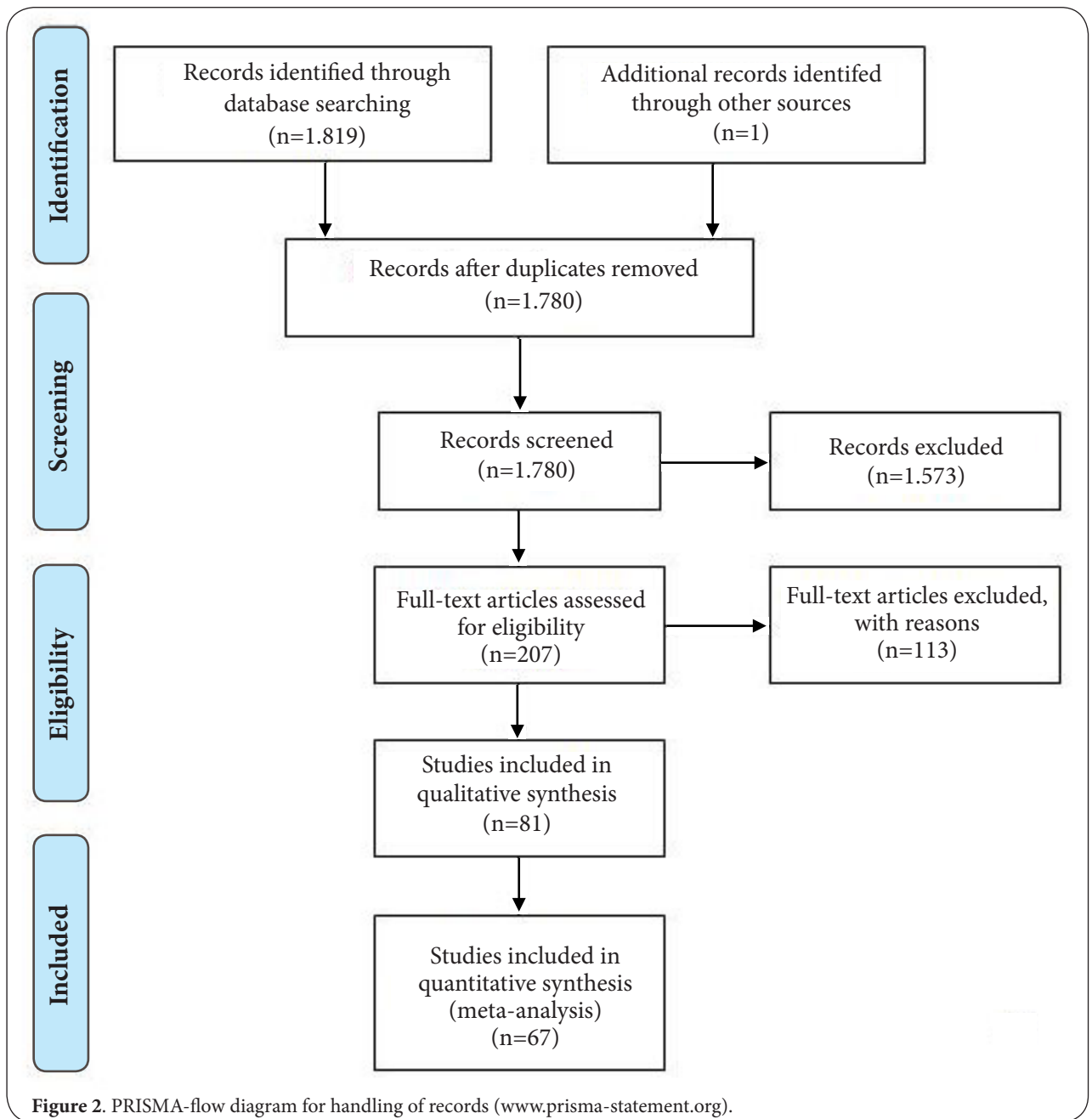


Figure 2. PRISMA-flow diagram for handling of records (www.prisma-statement.org).

paper [163], 1 performed an inter-laboratory comparison [164], 1 compared flow- and image cytometry [165], 1 was obsolete due to a following paper [166].

Methodologically sufficient papers

Papers that did not reveal the above mentioned shortcomings were considered as “methodologically sufficient”. 66 publications reported statistically significant correlations between various DNA-ploidy parameters and one of the above-mentioned patient-relevant endpoints. These comprised 15.693 patients (Tables 3-8):

- 8 level 1b studies reported a significant correlation of DNA-cytometric features with histologically proven cancer spread beyond the capsule as detected after radical prostatectomy [167-174]. 4 of them document a significant improvement of *diagnostic accuracy* concerning the prediction of organ confinement by DNA-ploidy features over Gleason-score alone (Table 3).
- 10 level 2b studies were found that report on a statistically significant correlation of DNA-cytometric features with recurrence-free survival after radical prostatectomy in a multivariate-analysis [16,175-179,181,184-186], 3 in

Table 3. Correlation of DNA-ploidy on biopsies with extracapsular spread (ECS) after radical prostatectomy (RPE). Bold p-values refer to Cox multivariate regression analysis.

	Year	Journal	Number of patients investigated	Months follow-up	Significance p	Flow/Image cytometry
Oxford level 1b						
Isharwal et al., [167]	2009	J Urol	370	5	<0.001 AUC-ROC+1.5%	ICM
Brinker et al., [168]	1999	J Urol	159	--	0.003	ICM
Vesalainen et al., [169]	1994	Br J Cancer	273	\bar{x} 156	<0.0001	FCM
Ross et al., [170]	1994	Cancer	89	\bar{x} 31.2	0.04	ICM
Green et al., [171]	1994	J Urol	70	--	<0.0001	ICM
Häggmann et al., [172]	1994	Scand J Urol Nephrol	54	--	<0.0001	ICM
Ross et al., [173]	1994	Mod Pathol	56	\bar{x} 28.8	0.03	ICM
Badalament et al., [174]	1991	Cancer	112	--	0.04	FCM

an univariate analysis [180,182,183] Table 4. [193] found the same after external radiation in a multivariate analysis. 4 level 3b studies [187-190] proved a significant correlation of DNA-ploidy parameters with recurrence free survival time after radical prostatectomy on multivariate analyses (Table 4).

- 2 level 3b studies [110,169] proved an independent correlation of DNA-ploidy parameters with overall survival time under AS apart from histological or cytological grading in a multivariate design (Table 5). 1 level 2b study did the same multivariate for recurrence free survival time [197] (Table 4).
- 6 level 2b studies proved a significant correlation of DNA-ploidy with overall survival after radical prostatectomy [180,200], 2 of them in a multivariate design [178,198,199,201]. 4 level 3b studies do the same [190,202,203], 1 of them univariate [204]. 6 studies provided a significant correlation of DNA-ploidy with overall survival after hormonal therapy in a multivariate design [169,208-211,213]. 6 level 3b-studies [85], 7 of them multivariate, showed the same [110,169,214-217]. 2 level 3b studies dealt with overall survival after AS [43,64] and report a significant correlation in a multivariate analysis. [212] represents the only publication in which DNA-ploidy did not correlate with survival. But “neither Gleason-score nor WHO-grade correlated” (Table 5).
- 18 level 2b studies report that DNA-ploidy parameters add significant independent prognostic information to the Gleason-score, 12 of them after radical prostatectomy [15,170,175-178,181,185,186,198,222,225] 2 after hormonal therapy [199,208], 1 after external radiation [205] 1 after AS [197], 1 after brachytherapy [207] and 1 after transurethral resection [197]. 9 level 3b studies report the same after radical prostatectomy [167,170,184,187,189,190,203,215,225] Table 6.
- 5 level 2b studies [170,180,182,190,225] report a significant correlation between DNA-ploidy parameters

and the occurrence of local progression or recurrence after radical prostatectomy, 1 after hormonal therapy [234], 1 after brachytherapy [227] (Table 7).

- 3 level 2b [170,186,229] and 1 level 3b study [173] report on a significant correlation of DNA-ploidy parameters with the occurrence of lymph node- or bone metastases after radical prostatectomy. 2 level 3b studies report the same after hormonal therapy [224,235] Table 8.

Tumor heterogeneity

The following publications dealt with aspects of heterogeneity of DNA-ploidy patterns in cancers of the prostate and representativity of punch biopsy for the tumor as a whole.

- Only 3/78 (3.8%) diploid needle-biopsy-DNA-histograms were discrepant to those obtained on subsequent prostatectomy specimens of stages A2-B2 cancers (diploid, aneuploid), while 21.4% of biopsies had been undergraded cancers as Gleason-low-grade [170].
- 141 separate cancer foci had been investigated in 68 radical prostatectomy specimens of different stages of cancer (mean 2.1 per prostate), [39] (n=43) showed heterogeneity of DNA-ploidy pattern (diploid, non-diploid) [171].
- 122 simulated punch biopsies had been investigated from nine prostatectomies containing cancers of unknown stage (mean 12 samples). Five (56%) showed heterogeneity of the DNA pattern (diploid, tetraploid, aneuploid). All four cases having a homogenous DNA content were DNA diploid in all samples. In those cases with a heterogeneous pattern, the areas having abnormal DNA-patterns could not be predicted by histologic pattern or grade [228].
- These authors compared DNA-ploidy patterns (diploid vs. non-diploid) in punch biopsies and subsequent prostatectomy specimens in 12 cases with cancer. Four sections per resected cancer of unknown stage had been investigated. The concordance was to 92% [230].
- Heterogeneity of DNA-ploidy patterns (diploid, tetraploid, aneuploid) had been found in 50% of 39 T2 and T3 cancers

Table 4. Correlation of DNA-ploidy with recurrence-free survival time. Bold p-values refer to Cox multivariate regression analysis.

	Year	Journal	Number of patients	Months Follow-up	Significance p	Flow/Image cytometry	Comment
After RPE							
Oxford level 2b							
Bantis et al., [175]	2009	Tumori	112	\bar{x} 60	0.001	ICM	pT2a-c, pT3a
Pretorius et al., [16]	2009	Cell Oncol	186	\bar{x} 73.3	GS 7 <0.001	ICM	--
Bantis et al., [176]	2005	J Exp Clin Cancer Res	70	\bar{x} 60.0	<0.007	ICM	--
Deliveliotis et al., [177]	2003	World J Urol	84	\bar{x} 45	0.0074	FCM	--
Amling et al., [178]	1999	J Urol	106	\bar{x} 120	0.002	FCM	After salvage prostatectomy
Gettman et al., [179]	1999	Adult Urology	211	60	<0.001	FCM	--
Mora et al., [180]	1999	Cancer Control	65	\bar{x} 80	0.002	FCM	--
Lerner et al., [181]	1996	J Urol	904	\bar{x} 38.4	p 0.0089	FCM	pT1, pT2
Zincke et al., [182]	1992	Cancer	370	\bar{x} 60	0.0008	FCM	Plus hormonal treatment
Wirth et al., [183]	1991	Eur Urol	80	120	0.00013	FCM	pT 1-3
Nativ et al., [184]	1989	Mayo Clin Proc	146	94.8	0.006	FCM	Stage C n=146
Blute et al., [185]	1989	J Urol	315	96	0.0004	FCM	Stages A, B
Winkler et al., [186]	1988	Mayo Clin Proc	91	\bar{x} 90	0.001	FCM	Low and high GS
Oxford level 3b							
Hawkins et al., [187]	1995	Urology	894	\bar{x} 100	<0.05	FCM	Partially HAT, & radiation
Carmichael et al., [188]	1995	J Urol	112	\bar{x} 102	<0.034	FCM	T2, NO, GS ≤6
Voges et al., [189]	1993	Eur Urol	85	\bar{x} 35	<0.005	FCM	<8 cm & <30% GS 4/5
Montgomery et al., [190]	1990	Arch Surg	261	240	<0.001	FCM	Stage B
Lee et al., [191]	1988	J Urol	88	60	<0.001	FCM	Interval free of disease
Oxford level 4							
Veltri et al., [192]	1994	J Cell Biochem	124	\bar{x} 103.2	0.008	ICM	PSA-recurrence
After external radiation							
Oxford level 2b							
Centeno et al., [193]	1994	Int J Rad Oncol Biol Phys	70	136	0.03	FCM	T1-4, N0, M0 S-Phase
Oxford level 3b							
Khoo et al., [194]	1999	The Prostate	42	\bar{x} 62	0.035	FCM	--
Pollack et al., [195]	1994	Cancer	76	\bar{x} 40	0.05	FCM	--
After brachytherapy							
Oxford level 3b							
Peters-Gee et al., [60]	1992	Cancer	51	\bar{x} 52	<0.05	ICM	--
After hormonal therapy							
Oxford level 2b							
Stege et al., [196]	1992	J Urol	67	>24	0.01	FCM	--
Oxford level 3b							
Visakorpi et al., [67]	1991	Br J Cancer	60	120	0.0103	FCM	--
After active surveillance							
Oxford level 2b							
Adolfsson et al., [197]	1990	J Urol	146	\bar{x} 50	0.018	FCM	Non-Progression. Therapy if progressed

Table 5. Correlation of DNA-ploidy with overall survival. Bold p-values refer to Cox multivariate regression analysis.

Authors	Year	Journal	Number of patients	Months follow-up	Significance p	Flow/Image cytometry	Comment
After RPE							
Oxford level 2b							
Ward et al., [198]	2005	BJU International	816	\bar{x} 123.6	0.008	FCM	cT3 only
Martinez –Jabaloyas et al., [199]	2004	Actas Urol Espan	54	\bar{x} 120	0.009	FCM	With bone marrow metastases
Amling et al., [178]	1999	J Urol	106	\bar{x} 120	0.001	FCM	After external radiation
Myers et al., [200]	1997	J Urol	62	\bar{x} >120	0.0014	FCM	Plus hormonal treatment
Di Silverio et al., [201]	1996	Eur Urol	85	\bar{x} 35	0.05	FCM	--
Zincke et al., [182]	1992	Cancer	370	\bar{x} 60	0.004	FCM	Plus hormonal treatment
Oxford level 3b							
Bratt et al., [202]	1996	Urology	57	54-92	0.009	FCM	S-phase fraction
Tinari et al., [203]	1993	Cancer	63	84	0.0044	FCM	Stages T1-T4
Miller et al., [204]	1991	J Urol	103	\bar{x} 60	<0.001	FCM	Stage D2
Montgomery et al., [190]	1990	Arch Surg	261	240	< 0.0001	FCM	Stage B
After external radiation							
Oxford level 3b							
Pollack et al., [205]	2003	J Clin Oncol	149	\bar{x} 96	0.05	ICM	
Song et al., [206]	1992	J Urol	65	>120	0.0001	ICM	Cancer cause specific survival
After brachytherapy							
Oxford level 2b							
Stephenson et al., [207]	1987	Cancer Res	82	60-180	0.0109	FCM	D1, N1, measured on lymphnodes
After hormonal therapy							
Oxford level 2b							
Martinez-Jablonayas et al., [208]	2002	Urology	127	>120	0.031	FCM	
Pollack et al., [209]	1997	Prostate	33	\bar{x} 45	0.008	FCM	
Ahlgren et al., [210]	1997	Urology	96	\bar{x} 176	0.004	ICM	
Forsslund et al., [211]	1996	Cancer	334	360	0.001	ICM	
Jørgensen et al., [212]	1995	Brit J Cancer	59	36	n. s.	ICM	Neither GS nor WHO-grade correlated
Vesalainen et al., [169]	1994	Brit J Cancer	273	\bar{x} 156	0.058	FCM	T1-2, M0
Al Abadi et al., [213]	1992	Eur Urol	271	>= 24	< 0.015	FCM	T1-4
Oxford level 3b							
Tribukait [110]	1993	Eur Urol	309	176	< 0.0001	ICM	
Van den Ouden et al., [214]	1993	J Urol	963	96	0.023	FCM	Stages T1-T4
Di Silverio et al., [215]	1992	Eur Urol	80	\bar{x} 60	< 0.005	FCM	Stage A-D
Forsslund et al., [216]	1992	Cancer	145	276	< 0.001	ICM	Cytological grade
Fordham et al., [217]	1986	Br J Surg	72	6-144	< 0.001	FCM	HT in 73%
Oxford level 4							
Miller et al., [204]	1991	J Urol	103	>60	<0.001	FCM	Stage D2
After active surveillance							
Oxford level 3b							
Vesalainen et al., [169]	1994	Brit J Cancer	106	\bar{x} 156	0.02	FCM	T1-2, M0
Tribukait et al., [110]	1993	Europ Urol	287	\bar{x} 176	< 0.001	FCM	FNABs
Oxford level 4							
Tribukait et al., [218]	1991	Acta Oncol	125	72	n.n.	FCM	FNABs
Oxford level 3b							
After TUR							
Oxford level 2b							
Borre et al., [219]	1998	Prostate	120	\bar{x} 180	0.024	FCM	96 WHO low grades only

Table 6. Addition of independent prognostic information to the Gleason-score. Bold p-values refer to Cox multivariate regression analysis.

Authors	Year	Journal	Number of patients	Months of follow-up	Significance p	Flow/Image cytometry	Diagnosis/ Prognosis	Comment
After RPE								
Oxford level 2b								
Bantis et al., [175]	2009	Tumori	112	\bar{x} 60	0.001	ICM	P	pT2a-c, pT3a
Pretorius et al., [16]	2009	Cell Oncol	186	\bar{x} 73.3	<0.001	ICM		GS 7
Ward et al., [198]	2005	BJU international	816	\bar{x} 126.6	0.008	FCM		pT3 only
Bantis et al., [176]	2005	J Exp Clin Cancer Res	70	\bar{x} 60	<0.007	ICM	P	
Deliveliotis et al., [177]	2003	World J Urol	84	\bar{x} 45	0.0074	FCM	P	--
Amling et al., [178]	1999	J Urol	106	120	0.002	FCM		After external radiation
Ross et al., [225]	1999	Urology	211	60	<0.001	FCM	P	Prediction of recurrence
Blute et al., [222]	1997	Adult Urology	2712	At primary diagnosis	0.005	FCM	D	Correlation with positive margins
Lerner et al., [181]	1996	J Urol	904	\bar{x} 42	p 0.0089	FCM		pT1, pT2
Ross et al., [170]	1994	Cancer	89	\bar{x} 31.2	0.006	ICM	P	Metastases & recurrences x3
Blute et al., [185]	1989	J Urol	315	96	0.0004	FCM	P	Stages A, B
Winkler at al., [186]	1988	Mayo Clin Proc	91	\bar{x} 90	<0.001	FCM	P	Low and high GS
Oxford level 3b								
Isharwal et al., [176]	2009	J Urol	370	3	AUC-ROC +1,5%	ICM	D	ECS
Ross et al., [225]	1999	Am J Surg Pathol	111	\bar{x} 27	0.002	ICM	P	Disease recurrence
Di Silverio et al., [215]	1996	Europ Urol	85	\bar{x} 35	0.05	FCM	P	--
Hawkins et al., [187]	1995	Urology	894	\bar{x} 100	<0.05	FCM	P	Partially HT
Ross et al., [170]	1994	Mod Pathol	56	\bar{x} 28.8	0.0026	ICM	P	--
Tinari et al., [203]	1993	Cancer	81	84	0.0044	FCM	P	Stages T1 – T4
Voges et al., [189]	1993	Eur Urol	85	70	0.001	FCM		Time to recurrence
Montgomery et al., [190]	1990	Arch Surg	261	240	0.001	FCM	P	Progression & cause spec. survival
Nativ et al., [184]	1989	Mayo Clin Proc	38	94.8	0.002	FCM	P	GS low-grade subgroup
After TUR								
Oxford level 3b								
Nielsen et al., [226]	1993	APMIS	79	120	0.0035	FCM	P	Grading acc. to Shelley
After external radiation								
Oxford level 2b								
Pollack et al., [205]	2003	J Clin Oncol	149	108	0.03	ICM	P	Survival
Oxford level 3b								
Song et al., [206]	1992	J Urol	65	>120	<0.0001	ICM	P	Mayo Grade
After brachytherapy								
Oxford level 2b								
Stephensen et al., [207]	1987	Cancer Res	82	\bar{x} 91.8	0.0109	FCM		Pelvic lymphnode dissection, D1, N+
Oxford level 3b								
Peters-Gee et al., [60]	1992	Cancer	51	\bar{x} 52	<0.05	ICM		--
After hormonal therapy								
Oxford level 2b								
Martinez-Jabaloyas et al., [199]	2004	Actas Urol Espan	54	120	0.009	ICM	P	All with bone metastases
Martinez-Jabaloyas et al., [208]	2002	Urology	127	>120	0.031	FCM	P	--
Oxford level 3b								
Pollack et al., [205]	2003	J Clin Oncol	149	\bar{x} 96	0.005	ICM	p	After external radiation

Continuation of Table 6.

Authors	Year	Journal	Number of patients	Months of follow-up	Significance p	Flow/Image cytometry	Diagnosis/Prognosis	Comment
Ahlgren et al., [210]	1997	Urology	96	176	0.0004	ICM	P	FNABs
Forslund et al., [211]	1996	Cancer	334	360	0.001	ICM	P	FNABs
Vesalainen et al., [169]	1994	Br J Cancer	101	\bar{x} 156	0.058	FCM	P	--
Di Silverio et al., [201]	1992	Eur Urol	80	\bar{x} 60	<0.05	FCM	P	--
Fordham et al., [217]	1986	Br J Surg	72	6-144	<0.001	FCM	P	Ploidy + GS better than GS alone
After active surveillance								
Oxford level 2b								
Adolfsson et al., [197]	1990	J Urol	146	\bar{x} 50	0.018	FCM	Non-Progression	FNABs. Therapy if progressed
After TUR								
Oxford level 2b								
Borre et al., [219]	1998	Prostate	120	\bar{x} 180	0.024	FCM	P	96 WHO low grades only

Table 7. Correlation of DNA-ploidy with local recurrence or progress. Bold p-values refer to Cox multivariate regression analysis.

Authors	Year	Journal	Number of patients	Months of follow-up	Significance p	Flow/Image cytometry	Comment
After RPE							
Oxford level 2b							
Ross et al., [225]	1999	Am J Surg Pathol	111	\bar{x} 27	0.002	ICM	--
Ross et al., [170]	1994	Cancer	89	\bar{x} 31.2	<0.001	ICM	3 x more frequent
Zincke et al., [182]	1992	Cancer	370	\bar{x} 60	<0.0001	FCM	Plus hormonal treatment
Montgomery et al., [190]	1990	Arch Surg	283	\bar{x} 112.8	<0.001	FCM	Stage B
Winkler et al., [186]	1988	Mayo Clin and Foundation	91	>60	<0.0001	FCM	Stage D1
After hormonal therapy							
Oxford level 2b							
Eskelinen et al., [227]	1991	Eur Urol	35	\bar{x} 187	0.028	FCM	T1/2
After Brachytherapy							
Oxford level 2b							
Keyes et al., [223]	2013	In J Rad Oncol Biol Phys	94	\bar{x} 90	0.011	ICM	PSA recurrence

Table 8. Correlation of DNA-ploidy with occurrence of lymphnode- or bone metastases. Bold p-values refer to Cox multivariate regression analysis.

Authors	Year	Journal	Number of patients	Months of follow-up	Significance p	Flow/Image cytometry	Lymph nodes/ Bone	Remarks
After RPE								
Oxford level 2b								
Ross et al., [170]	1994	Cancer	89	\bar{x} 31.2	0.006	ICM	--	--
Ross et al., [229]	1993	Cancer	100	At primary diagnosis	0.0001	ICM	L & B	71 after laparotomy
Winkler et al., [186]	1988	Mayo Clin Rep	91	\bar{x} 90	<0.0001	FCM	B	D1
Oxford level 3b								
Ross et al., [173]	1994	Mod Pathol	56	\bar{x} 28.8	0.0026	ICM	L, B	--
Oxford level 4								
Tucci et al., [57]	1994	Brazilian J Med Biol Res	28	\bar{x} 50	0.03	ICM	B	--
After hormonal therapy								
Oxford level 3b								
Tribukait [235]	1993	Eur Urol	309	176	<0.0001	FCM	--	--
Eskelinen et al., [227]	1991	Eur Urol	91	\bar{x} 187	0.0601	FCM	Ln	--

in radical prostatectomies. Five simulated punch biopsies had been taken per specimen. The risk of underestimation decreased from 60% with one biopsy to 5% with five investigated biopsies [231].

- 123 DNA-histograms from 48 men with prostatectomy due to cancers of unknown stage (mean 2,6) had been compared with those of six preoperative biopsies (diploid, non-diploid). In 34 men (71%) DNA-ploidy in prostatectomies was correctly predicted as either diploid or non-diploid on biopsies. Under-estimation occurred mainly when only one or two biopsies were analyzed [232].

Conclusions

All twelve reviews on diagnostic or prognostic DNA-measurements in prostate cancer published so far are merely “narrative” and not systematic ones. Yet, they all conclude that DNA-ploidy is of either diagnostic or of prognostic value, without considering the methodologic quality of addressed papers.

Shortcomings of published papers

The most frequent cause for exclusion of papers (n=32) was an inadequate study design (not enough patients:<50), mixture of different therapies, lacking therapeutic, clinical or follow-up information, selection of patients. In 13 publications DNA-measurements were methodologically insufficient (inadequate sampling or calibration, measurements of sections of different thickness, paucity of cells). Correlation with non-diagnostic or prognostic features (n=25) and dealing with methodological aspects only (n=24) cannot be criticized. Many scientists did not obey existing respective international and interdisciplinary methodological consensus reports [30,32-34], especially concerning problematical types of specimens (sections), missing performance standards (<300 nuclei) and individual prognostic interpretation of data.

Algorithms for DNA-grading of prostate cancer

[52] have been the first to propose an objective alternative for grading prostate cancer malignancy based on DNA-measurements in cancer cells. Our group has published on “DNA-grading of prostatic carcinoma: Prognostic validity and reproducibility” [233]. Up to 1998 no standardized, internationally agreed algorithms existed, on how to derive prognostically different groups from DNA-histograms of prostate cancers. Each author individually defined at least two, up to five different categories. The only common aspect was that they all comprised a DNA-diploid category as the prognostically most favorable one. In 1998 and 2001 the European Society of Analytical Cellular Pathology (ESACP) “Taskforce on Standardization of Diagnostic DNA-Image Cytometry” has published a detailed proposal how to derive four prognostically relevant groups, resp. grades of malignancy, from DNA-measurements of malignant tumors: peridiploid, peritetraploid, x-ploid and multiploid [33,34] (Figure 1 and Table 1). Unfortunately, not many authors have adopted the respective standardized

algorithms since then. Thus, their results concerning the prognostic validity of DNA-grading the malignancy of prostate cancer are hardly comparable. Nevertheless, the main, clinically relevant differentiation refers to DNA-diploidy vs. DNA-non diploidy. During tumor progression, peridiploid cancers primarily increase their rate of proliferation [64,234]. Later on during tumor progression, additional peritetraploid clones evolve [235]. Thus, concerning diploidy vs. non-diploidy, it is not relevant which c-value the peridiploid peak exactly has, but if there is a second peak at 4c or elsewhere. According to [210,234] a prognostically relevant proliferation rate >5% can be stated in peridiploid DNA-histograms, supposed a reasonable number of >1000 of nuclei had been measured to obtain representative results [34].

Diagnostic accuracy

The fact that DNA-ploidy-parameters are able to nearly exclude cancer spread beyond the capsule as detected after radical prostatectomy significantly more precise than the Gleason-Score, has been proven in 8 level 1b studies [167-174], Table 3. Thus DNA-ploidy should additionally be taken into consideration, whenever organ confinement is a prerequisite for certain therapeutic strategies, like AS.

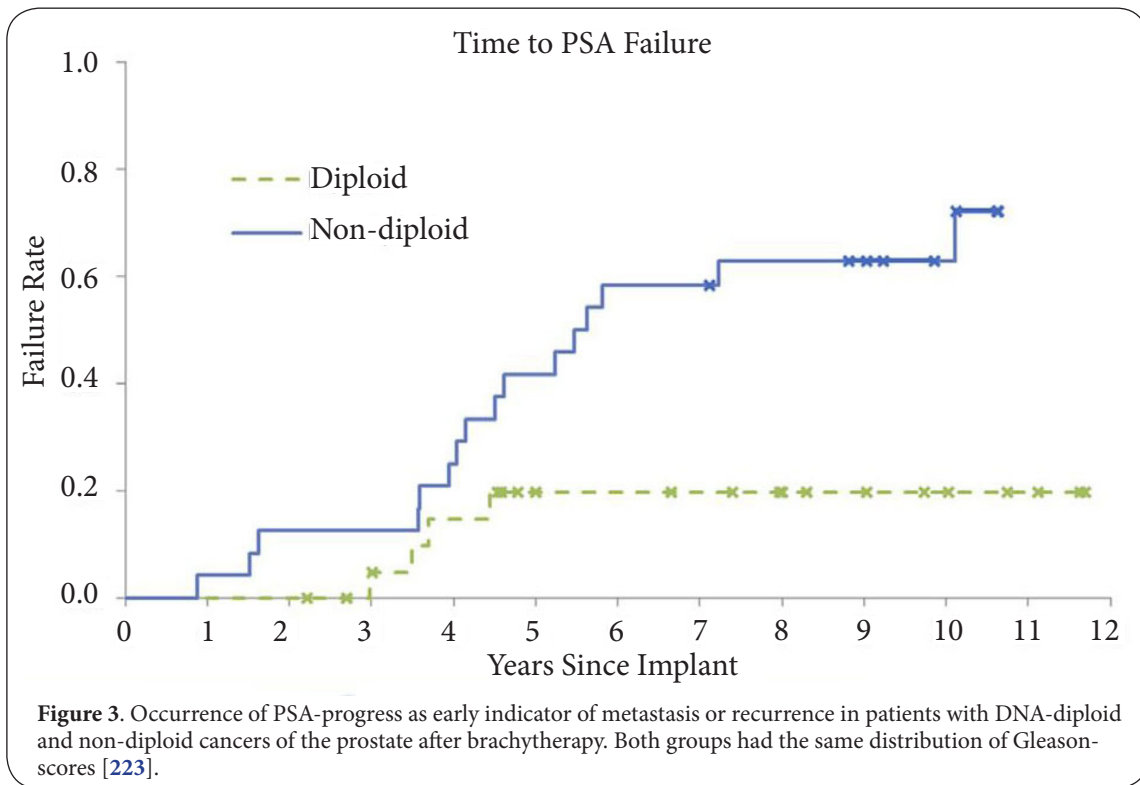
Prognostic validity

For untreated patients with early prostate cancer under Active Surveillance the following results have been published:

- Documented for 120 untreated patients in a multivariate level 2b study the significant superior ability of DNA-ploidy over the histological WHO-grade to predict tumor-specific survival time [219].
- Proved in a multivariate level 1b-study with a statistically significant correlation of DNA-ploidy with recurrence-free survival time in 146 untreated patients in comparison with the cytological grade [197,236].
- Proved for 106 untreated patients in a multivariate level 2b study a statistically significant correlation of DNA-ploidy with overall survival time in comparison with the Gleason-score [169].
- Proved for 287 primary untreated patients in a multivariate level 2b study significant correlation with overall survival time in comparison with the cytological grade [235,236].

Brachytherapy is another standard treatment for organ confined prostate cancer. Patients that most likely reveal cancer spread beyond the capsule have to be excluded from this approach. Using core biopsy material, [223] could correctly predict the majority of failures and non-failures, while Gleason-score failed (Figure 3). DNA-diploid patients had a significantly lower rate of disease recurrence as compared with DNA-aneuploid patients. Thus, DNA-grading of prostate cancer malignancy can be used to further specify the inclusion criteria for brachytherapy.

The fact that DNA-ploidy-parameters could prove in 17 retrospective level 2b studies to add significant prognostic



information to the Gleason-score independent from the type of therapy (Table 6) should encourage scientists to conduct studies in order to confirm these findings on a higher level of evidence as this had already been proposed by a WHO-working group [48]. Yet, level of evidence 1b studies, proving independent prognostic validity of DNA-ploidy over Gleason-score to predict non progression of clinically insignificant prostate cancers under Active Surveillance in a prospective setting are still missing. We recommend to perform these.

Heterogeneity

Data on the representativity of DNA-ploidy measurements on biopsies for the cancer as a whole are heterogeneous and depend on the number of samples investigated. While [168,228] and [230] found discrepancies in only 3.8%, 5.0% and 8.0%, [210,232] reported different ploidy-levels in 24.1% and 29.0%. These figures are lower than comparable ones for the Gleason-score (30%:11). Because DNA-ploidy is inhomogenously distributed within prostate cancers, especially of advanced stages, as histopathological grades are, it is advisable to investigate all cancer foci in biopsies, either separately or pooled.

Why is DNA-cytometry not used more widely?

Some critical comments on this method overlook the enormous technological input that computer science, digital image analysis and informatics have meanwhile contributed to develop this method, becoming a biologically well founded, fast and

valid prognostic technology. The fact that the procedure up to the recent development of digital nuclear classifiers has been too laborious and too time consuming and pathologists have not been sufficiently reimbursed, further prohibited its clinical acceptance.

While retrospective studies proving the independent prognostic validity of DNA-ploidy measurements have been published for all main types of treatment modalities of prostate cancers, prospective level 1b studies are still missing. As no other treatment decision in cancers of the prostate is so much dependent from an objective, reproducible and valid prognostication of an individual cancers behavior as Active Surveillance, prospective studies should especially focus on patients under this strategy.

Competing interests

The authors declare that they have no competing interests.

Authors' contributions

Authors' contributions	AB	MT	MS	JD	SB
Research concept and design	✓	--	--	--	--
Collection and/or assembly of data	--	✓	✓	--	--
Data analysis and interpretation	✓	--	--	✓	--
Writing the article	✓	--	--	--	--
Critical revision of the article	--	--	✓	✓	✓
Final approval of article	✓	--	--	--	--
Statistical analysis	✓	--	--	--	--

Publication history

Senior Editor: Takuji Tanaka, Gifu University, Japan.
Received: 28-Aug-2014 Final Revised: 15-Sep-2014
Accepted: 03-Oct-2014 Published: 10-Oct-2014

References

1. Robert-Koch-Institut: Zentrum für Krebsregisterdaten. Krebsarten. 2013. | [Website](#)
2. Jemal A, Siegel R, Ward E, Murray T, Xu J, Smigal C and Thun MJ. Cancer statistics. *CA Cancer J Clin.* 2006; **56**:106-30. | [Article](#) | [PubMed](#)
3. Schubert-Fritsche G, Eckel R, Eisenmenger W and Hölzel D. Qualität von Angaben auf Todesbescheinigungen. *Dtsch. Ärztebl.* 2002; **99**:A50-55. | [Pdf](#)
4. Weißbach, Lothar. New findings for treatment of locally confined prostate cancer. The HAROW-report 2014.
5. Stamatiou K, Alevizos A, Mariolis A, Spiliopoulou C, Alevizou A, Bovis K and Sofras F. Do clinically insignificant tumors of the prostate exist? *Urol Int.* 2008; **81**:379-82. | [Article](#) | [PubMed](#)
6. Roemeling S, Roobol MJ, Postma R, Gosselaar C, van der Kwast TH, Bangma CH and Schroder FH. Management and survival of screen-detected prostate cancer patients who might have been suitable for active surveillance. *Eur Urol.* 2006; **50**:475-82. | [Article](#) | [PubMed](#)
7. Godtman RA, Holmberg E, Khatami A, Stranne J and Hugosson J. Outcome following active surveillance of men with screen-detected prostate cancer. Results from the Goteborg randomised population-based prostate cancer screening trial. *Eur Urol.* 2013; **63**:101-7. | [Article](#) | [PubMed](#)
8. Deutsche Gesellschaft für Urologie. Interdisziplinäre Leitlinie der Qualität S3 zur Früherkennung, Diagnose und Therapie der verschiedenen Stadien des Prostatakarzinoms. 2011, Version 2.0.
9. Epstein JI, Allsbrook WC, Jr., Amin MB and Egevad LL. The 2005 International Society of Urological Pathology (ISUP) Consensus Conference on Gleason Grading of Prostatic Carcinoma. *Am J Surg Pathol.* 2005; **29**:1228-42. | [Article](#) | [PubMed](#)
10. Gleason DF and Mellinger GT. The Veterans Administration Cooperative Urological Research Group: Prediction of prognosis for prostatic adenocarcinoma by combined histological grading and clinical staging. *J. Urol.* 1974; **111**:58-64.
11. Veloso SG, Lima MF, Salles PG, Berenstein CK, Scaloni JD and Bambirra EA. Interobserver agreement of Gleason score and modified Gleason score in needle biopsy and in surgical specimen of prostate cancer. *Int Braz J Urol.* 2007; **33**:639-46. | [Article](#) | [PubMed](#)
12. Burchardt M, Engers R, Müller M, Burchardt T, Willers R, Epstein JI, Ackermann R, Gabbert HE, de la Taille A and Rubin MA. Interobserver reproducibility of Gleason grading: evaluation using prostate cancer tissue microarrays. *J Cancer Res Clin Oncol.* 2008; **134**:1071-8. | [Article](#) | [PubMed](#)
13. Netto GJ, Eisenberger M and Epstein JI. Interobserver variability in histologic evaluation of radical prostatectomy between central and local pathologists: findings of TAX 3501 multinational clinical trial. *Urology.* 2011; **77**:1155-60. | [Article](#) | [PubMed Abstract](#) | [PubMed Full Text](#)
14. Bottke D, Golz R, Störkel S, Hinke A, Siegmann A, Hertle L, Miller K, Hinkelbein W and Wiegel T. Phase 3 study of adjuvant radiotherapy versus wait and see in pT3 prostate cancer: impact of pathology review on analysis. *Eur Urol.* 2013; **64**:193-8. | [Article](#) | [PubMed](#)
15. Helpap B and Egevad L. The significance of modified Gleason grading of prostatic carcinoma in biopsy and radical prostatectomy specimens. *Virchows Arch.* 2006; **449**:622-7. | [Article](#) | [PubMed](#)
16. Pretorius ME, Waehre H, Abeler VM, Davidson B, Vlatkovic L, Lothe RA, Giercksky KE and Danielsen HE. Large scale genomic instability as an additive prognostic marker in early prostate cancer. *Cell Oncol.* 2009; **31**:251-9. | [Article](#) | [PubMed](#)
17. Billis A, Guimaraes MS, Freitas LL, Meirelles L, Magna LA and Ferreira U. The impact of the 2005 International Society of Urological Pathology Consensus Conference on standard Gleason grading of prostatic carcinoma in needle biopsies. *J Urol.* 2008; **180**:548-52. | [Article](#) | [PubMed](#)
18. Mitelman F, Johansson B and Mertens F (Eds.): Mitelman Database of Chromosome Aberrations and Gene Fusions in Cancer (2014). *Cancer genome anatomy project.* 2014.
19. Baretton GB, Valina C, Vogt T, Schneiderbanger K, Diebold J and Lohrs U. Interphase cytogenetic analysis of prostatic carcinomas by use of nonisotopic in situ hybridization. *Cancer Res.* 1994; **54**:4472-80. | [Article](#) | [PubMed](#)
20. Gburek BM, Kollmorgen TA, Qian J, D'Souza-Gburek SM, Lieber MM and Jenkins RB. Chromosomal anomalies in stage D1 prostate adenocarcinoma primary tumors and lymph node metastases detected by fluorescence in situ hybridization. *J Urol.* 1997; **157**:223-7. | [Article](#) | [PubMed](#)
21. Alcaraz A, Takahashi S, Brown JA, Herath JF, Bergstralh EJ, Larson-Keller JJ, Lieber MM and Jenkins RB. Aneuploidy and aneusomy of chromosome 7 detected by fluorescence in situ hybridization are markers of poor prognosis in prostate cancer. *Cancer Res.* 1994; **54**:3998-4002. | [Article](#) | [PubMed](#)
22. Henke RP, Kruger E, Ayhan N, Hubner D and Hammerer P. Frequency and distribution of numerical chromosomal aberrations in prostatic cancer. *Hum Pathol.* 1994; **25**:476-84. | [Article](#) | [PubMed](#)
23. Matsuyama H, Pan Y, Oba K, Yoshihiro S, Matsuda K, Hagarth L, Kudren D, Naito K, Bergerheim US and Ekman P. The role of chromosome 8p22 deletion for predicting disease progression and pathological staging in prostate cancer. *Aktuelle Urol.* 2003; **34**:247-9. | [Article](#) | [PubMed](#)
24. Duesberg P, Li R, Fabarius A and Hehlmann R. The chromosomal basis of cancer. *Cell Oncol.* 2005; **27**:293-318. | [Article](#) | [PubMed](#)
25. Duesberg P and McCormack A. Immortality of cancers: a consequence of inherent karyotypic variations and selections for autonomy. *Cell Cycle.* 2013; **12**:783-802. | [Article](#) | [PubMed Abstract](#) | [PubMed Full Text](#)
26. Shankey TV, Kallioniemi OP, Koslowski JM, Lieber ML, Mayall BH, Miller G and Smith GJ. Consensus review of the clinical utility of DNA content cytometry in prostate cancer. *Cytometry.* 1993; **14**:497-500. | [Article](#) | [PubMed](#)
27. Ormerod MG, Tribukait B and Giaretti W. Consensus report of the task force on standardisation of DNA flow cytometry in clinical pathology. DNA Flow Cytometry Task Force of the European Society for Analytical Cellular Pathology. *Anal Cell Pathol.* 1998; **17**:103-10. | [Article](#) | [PubMed](#)
28. Sandritter W, Carl M and Ritter W. Cytophotometric measurements of the DNA content of human malignant tumors by means of the Feulgen reaction. *Acta Cytol.* 1966; **10**:26-30. | [PubMed](#)
29. Brugal G and Chassery JM. A new image-processing system designed for densitometry and pattern analysis of microscopic specimens. *Histochemistry.* 1977; **52**:241-258.
30. Böcking, Giroud F and Reith A. Consensus report of the ESACP task force on standardization of diagnostic DNA image cytometry. European Society for Analytical Cellular Pathology. *Anal Cell Pathol.* 1995; **8**:67-74. | [PubMed](#)
31. Bacus JW and Bacus JV. Quality control in image cytometry: DNA ploidy. *J Cell Biochem Suppl.* 1994; **19**:153-64. | [PubMed](#)
32. Giroud F, Haroske G, Reith A and Böcking A. 1997 ESACP consensus report on diagnostic DNA image cytometry. Part II: Specific recommendations for quality assurance. European Society for Analytical Cellular Pathology. *Anal Cell Pathol.* 1998; **17**:201-8. | [Article](#) | [PubMed](#)
33. Haroske G, Giroud F, Reith A and Böcking A. 1997 ESACP consensus report on diagnostic DNA image cytometry. Part I: basic considerations and recommendations for preparation, measurement and interpretation. European Society for Analytical Cellular Pathology. *Anal Cell Pathol.* 1998; **17**:189-200. | [PubMed](#)
34. Haroske G, Baak JP, Danielsen H, Giroud F, Gschwendtner A, Oberholzer

- M, Reith A, Spieler P and Böcking A. **Fourth updated ESACP consensus report on diagnostic DNA image cytometry.** *Anal Cell Pathol.* 2001; **23**:89-95. | [PubMed](#)
35. Feulgen R. **Neue Wege zum biologisch-histologischen Studium der Zellkerne. a) Die Nuklealfärbung, ein mikrochemischer Nachweis der Thymonukleinsäure. b) Über das Vorkommen von nuklealem und anuklealem Chromatin.** *Ber. Ges. Physiol.* 1924; **22**:489-490.
36. Engelhardt M. **Kinetiken des Prostata Spezifischen Antigens als Indikationsstellung zur Prostatabiopsie.** Med. Diss. Univ. Düsseldorf, Germany, 2014.
37. Tils M. **Häufigkeit von DNA-Ploidiemustern in Stanzbiopsien vom Prostatakarzinom.** Med. Diss. Univ. Düsseldorf, Germany, 2014.
38. Buhmeida A, Pyrhonen S, Laato M and Collan Y. **Prognostic factors in prostate cancer.** *Diagn Pathol.* 2006; **1**:4. | [Article](#) | [PubMed Abstract](#) | [PubMed Full Text](#)
39. Montironi R, Mazzucchelli R, Scarpelli M, Lopez-Beltran A, Mikuz G, Algaba F and Boccon-Gibod L. **Prostate carcinoma II: prognostic factors in prostate needle biopsies.** *BJU Int.* 2006; **97**:492-7. | [Article](#) | [PubMed](#)
40. Epstein JI, Amin M, Boccon-Gibod L, Egevad L, Humphrey PA, Mikuz G, Newling D, Nilsson S, Sakr W, Srigley JR, Wheeler TM and Montironi R. **Prognostic factors and reporting of prostate carcinoma in radical prostatectomy and pelvic lymphadenectomy specimens.** *Scand J Urol Nephrol Suppl.* 2005; **34**:63. | [Article](#) | [PubMed](#)
41. Ross JS, Jennings TA, Nazeer T, Sheehan CE, Fisher HA, Kauffman RA, Anwar S and Kallakury BV. **Prognostic factors in prostate cancer.** *Am J Clin Pathol.* 2003; **120 Suppl**:S85-100. | [Article](#) | [PubMed](#)
42. Chakravarti A and Zhai GG. **Molecular and genetic prognostic factors of prostate cancer.** *World J Urol.* 2003; **21**:265-74. | [Article](#) | [PubMed](#)
43. Mazzucchelli R, Lopez-Beltran A, Scarpelli M and Montironi R. **Predictive factors in prostate needle biopsy.** *Pathologica.* 2002; **94**:331-7. | [PubMed](#)
44. Miller GJ, Brawer MK, Sakr WA, Thrasher JB and Townsend R. **Prostate cancer: serum and tissue markers.** *Rev Urol.* 2001; **3 Suppl 2**:S11-9. | [PubMed Abstract](#) | [PubMed Full Text](#)
45. Bostwick DG, Grignon DJ, Hammond ME, Amin MB, Cohen M, Crawford D, Gospodarowicz M, Kaplan RS, Miller DS, Montironi R, Pajak TF, Pollack A, Srigley JR and Yarbrow JW. **Prognostic factors in prostate cancer. College of American Pathologists Consensus Statement 1999.** *Arch Pathol Lab Med.* 2000; **124**:995-1000. | [Article](#) | [PubMed](#)
46. Sakr WA and Grignon DJ. **Prostate cancer: indicators of aggressiveness.** *Eur Urol.* 1997; **32 Suppl 3**:15-23. | [PubMed](#)
47. Mikuz G. **Pathology of prostate cancer. Old problems and new facts.** *Adv Clin Path.* 1997; **1**:21-34. | [Article](#) | [PubMed](#)
48. Schröder F, Tribukait B, Böcking A, De Vere White R, Koss L, Lieber M, Stenkvist B and Zetterberg A. **Clinical utility of cellular DNA measurements in prostate carcinoma. Consensus Conference on Diagnosis and Prognostic Parameters in Localized Prostate Cancer. Stockholm, Sweden, May 12-13, 1993.** *Scand J Urol Nephrol Suppl.* 1994; **162**:51-63. | [PubMed](#)
49. Lieber MM. **DNA ploidy: early malignant lesions.** *J Cell Biochem Suppl.* 1992; **16H**:44-6. | [Article](#) | [PubMed](#)
50. Deitch AD and de Vere White RW. **Flow cytometry as a predictive modality in prostate cancer.** *Hum Pathol.* 1992; **23**:352-9. | [Article](#) | [PubMed](#)
51. Böcking A. **Diagnostic DNA cytometry of prostatic cancer.** *Diagn. Oncol.* 1992; **2**:90-102.
52. Tavares AS, Costa J, de Carvalho A and Reis M. **Tumour ploidy and prognosis in carcinomas of the bladder and prostate.** *Br J Cancer.* 1966; **20**:438-41. | [Article](#) | [PubMed Abstract](#) | [PubMed Full Text](#)
53. Phillips B, Ball C, Sackett D, Badenoch D, Straus S, Haynes B, Dawes M and Howick J. **Oxford Center for Evidence Based Medicine. Levels of evidence.** 2009. | [Website](#)
54. Abaza R, Diaz LK, Jr., Laskin WB and Pins MR. **Prognostic value of DNA ploidy, bcl-2 and p53 in localized prostate adenocarcinoma incidentally discovered at transurethral prostatectomy.** *J Urol.* 2006; **176**:2701-5. | [Article](#) | [PubMed](#)
55. Moussa M, Song TY, Frei JV, Peers G and Chin JL. **DNA cytometric proliferative index predicting organ confinement in clinical stage-B prostate cancer.** *Clin Invest Med.* 1997; **20**:119-26. | [Article](#) | [PubMed](#)
56. Romics I, Bocsi J, Bach D, Beutler W, Frang D and Kopper L. **DNA content of prostatic cancer measured by flow cytometry in patients undergoing radical prostatectomy.** *Anticancer Res.* 1995; **15**:1131-4. | [PubMed](#)
57. Tucci Junior S, Blumenfeld W and Narayan P. **Ploidy status correlates with outcome in stage B prostate adenocarcinoma.** *Braz J Med Biol Res.* 1994; **27**:25-32. | [Article](#) | [PubMed](#)
58. Babiarz J, Peters JM, Miles B and Crissman JD. **Comparison of DNA content in primary and lymph node metastases in prostate adenocarcinoma.** *Anal Quant Cytol Histol.* 1993; **15**:158-64. | [Article](#) | [PubMed](#)
59. Yokogi H, Mizutani M and Ishibe T. **Flow cytometric DNA analysis of stage D2 prostatic carcinoma.** *Urol Int.* 1991; **47**:57-9. | [Article](#) | [PubMed](#)
60. McIntire TL, Murphy WM, Coon JS, Chandler RW, Schwartz D, Conway S and Weinstein RS. **The prognostic value of DNA ploidy combined with histologic substaging for incidental carcinoma of the prostate gland.** *Am J Clin Pathol.* 1988; **89**:370-3. | [Article](#) | [PubMed](#)
61. Lundberg S, Carstensen J and Rundquist I. **DNA flow cytometry and histopathological grading of paraffin-embedded prostate biopsy specimens in a survival study.** *Cancer Res.* 1987; **47**:1973-7. | [Article](#) | [PubMed](#)
62. Frankfurt OS, Chin JL, Englander LS, Greco WR, Pontes JE and Rustum YM. **Relationship between DNA ploidy, glandular differentiation, and tumor spread in human prostate cancer.** *Cancer Res.* 1985; **45**:1418-23. | [Article](#) | [PubMed](#)
63. Böcking A, Auffermann W, Jocham D, Contractor H and Wohltmann D. **DNA grading of malignancy and tumor regression in prostatic carcinoma under hormone therapy.** *Appl Pathol.* 1985; **3**:206-14. | [PubMed](#)
64. Ahlgren G, Falkmer U, Gadaleanu V and Abrahamsson PA. **Evaluation of DNA ploidy combined with a cytometric proliferation index of imprints from core needle biopsies in prostate cancer.** *Eur Urol.* 1999; **36**:314-9. | [Article](#) | [PubMed](#)
65. Nordgren H, Nilsson S, Eklov S, Stattin P, Naining W, Heiden T, Bergkvist L, Karlberg L, Lundholm C, Harvig B and et al. **Modal DNA values and estramustine-binding protein (EMBP) as prognostic markers in prostatic cancer.** *Acta Oncol.* 1991; **30**:211-4. | [Article](#) | [PubMed](#)
66. Peters-Gee JM, Miles BJ, Cerny JC, Gaba AR, Jacobsen G and Crissman JD. **Prognostic significance of DNA quantitation in stage D1 prostate carcinoma with the use of image analysis.** *Cancer.* 1992; **70**:1159-65. | [Pdf](#) | [PubMed](#)
67. Visakorpi T, Kallioniemi OP, Paronen IY, Isola JJ, Heikkinen AI and Koivula TA. **Flow cytometric analysis of DNA ploidy and S-phase fraction from prostatic carcinomas: implications for prognosis and response to endocrine therapy.** *Br J Cancer.* 1991; **64**:578-82. | [Article](#) | [PubMed Abstract](#) | [PubMed Full Text](#)
68. Haugen OA and Mjølnerod O. **DNA-ploidy as prognostic factor in prostatic carcinoma.** *Int J Cancer.* 1990; **45**:224-8. | [Article](#) | [PubMed](#)
69. Borgmann V, al-Abadi H and Nagel R. **Treatment of locally advanced prostatic carcinoma with LHRH analogues: cytological, DNA-cytophotometrical, and clinical results.** *Am J Clin Oncol.* 1988; **11 Suppl 1**:S19-28. | [Article](#) | [PubMed](#)
70. Azua J, Romeo P, Valle J and Azua J, Jr. **Cytologic differentiation grade and malignancy DNA index in prostatic adenocarcinoma.** *Anal Quant Cytol Histol.* 1997; **19**:102-6. | [Article](#) | [PubMed](#)
71. Azua J, Romeo P, Valle J and Azua J, Jr. **DNA quantification as a prognostic factor in prostatic adenocarcinoma.** *Anal Quant Cytol Histol.* 1996; **18**:330-6. | [Article](#) | [PubMed](#)
72. Al Abadi H and Nagel R. **Clinical relevance of cytology and DNA-cytometry in the therapy of patients with prostatic carcinoma.** *Verh. Dtsch. Ges. Zyt.* 1995; **19**:181-197.

73. Al-Abadi H and Nagel R. **Nuclear DNA analysis: the relevance of ploidy, DNA heterogeneity and phases of the cell cycle in 329 patients with prostatic carcinoma. A study on a follow-up of eight years.** *Urol Int.* 1990; **45**:350-5. | [Article](#) | [PubMed](#)
74. Al Abadi H and Nagel R. **Prognostische Bedeutung von Ploidie und proliferativer Aktivität beim lokal fortgeschrittenen Prostatakarzinom.** *Akt. Urol.* 1988; **19**:182-186. | [Article](#)
75. Paz-Bouza JI, Orfao A, Abad M, Ciudad J, Garcia MC, Lopez A and Bullon A. **Transrectal fine needle aspiration biopsy of the prostate combining cytomorphologic, DNA ploidy status and cell cycle distribution studies.** *Pathol Res Pract.* 1994; **190**:682-9. | [Article](#) | [PubMed](#)
76. Furusato M, Allsbrook WC, Jr., Kato H, Takahashi H, Miyasaka Y, Nomura K, Asano K, Ito T and Aizawa S. **Flow cytometric analysis of prostatic carcinoma with and without bone marrow metastasis.** *Adv Exp Med Biol.* 1992; **324**:189-91. | [PubMed](#)
77. Humphrey PA, Walther PJ, Currin SM and Vollmer RT. **Histologic grade, DNA ploidy, and intraglandular tumor extent as indicators of tumor progression of clinical stage B prostatic carcinoma. A direct comparison.** *Am J Surg Pathol.* 1991; **15**:1165-70. | [Article](#) | [PubMed](#)
78. Qian J, Bostwick DG, Iczkowski KA, Betre K, Wilson MJ, Le C and Sinha AA. **Characterization of prostate cancer in needle biopsy by cathepsin B, cell proliferation and DNA ploidy.** *Anticancer Res.* 2010; **30**:719-25. | [Article](#) | [PubMed](#)
79. Lorenzato M, Rey D, Durlach A, Bouttens D, Birembaut P and Staerman F. **DNA image cytometry on biopsies can help the detection of localized Gleason 3+3 prostate cancers.** *J Urol.* 2004; **172**:1311-3. | [Article](#) | [PubMed](#)
80. Buhmeida A, Backman H and Collan Y. **DNA cytometry in diagnostic cytology of the prostate gland.** *Anticancer Res.* 2002; **22**:2397-402. | [PubMed](#)
81. Greene DR, Taylor SR, Wheeler TM and Scardino PT. **DNA ploidy by image analysis of individual foci of prostate cancer: a preliminary report.** *Cancer Res.* 1991; **51**:4084-9. | [Article](#) | [PubMed](#)
82. Zetterberg A and Forsslund G. **Ploidy level and tumor progression in prostatic carcinoma.** *Acta Oncol.* 1991; **30**:193-9. | [Article](#) | [PubMed](#)
83. Forsslund G and Zetterberg A. **Ploidy level determinations in high-grade and low-grade malignant variants of prostatic carcinoma.** *Cancer Res.* 1990; **50**:4281-5. | [Article](#) | [PubMed](#)
84. Adolfsson J and Tribukait B. **Modal DNA-values in prostate cancer patients with deferred therapy or endocrine therapy.** *Acta Oncol.* 1991; **30**:209-10. | [Article](#) | [PubMed](#)
85. Muller JG, Demel S, Wirth MP, Manseck A, Frohmuller HG and Muller HA. **DNA-ploidy, G2M-fractions and prognosis of stages B and C prostate carcinoma.** *Virchows Arch.* 1994; **424**:647-51. | [Article](#) | [PubMed](#)
86. Montironi R, Scarpelli M, Galluzzi CM and Diamanti L. **Aneuploidy and nuclear features of prostatic intraepithelial neoplasia (PIN).** *J Cell Biochem Suppl.* 1992; **16H**:47-53. | [Article](#) | [PubMed](#)
87. Wang N, Stenkvist BG and Tribukait B. **Morphometry of nuclei of the normal and malignant prostate in relation to DNA ploidy.** *Anal Quant Cytol Histol.* 1992; **14**:210-6. | [Article](#) | [PubMed](#)
88. Epstein JI, Christensen WN, Steinberg GD and Carter HB. **Comparison of DNA ploidy and nuclear size, shape and chromatin irregularity in tissue sections and smears of prostatic carcinoma.** *Anal Quant Cytol Histol.* 1990; **12**:352-8. | [Article](#) | [PubMed](#)
89. Montironi R, Scarpelli M, Sisti S, Braccischi A, Gusella P, Pisani E, Alberti R and Mariuzzi GM. **Quantitative analysis of prostatic intraepithelial neoplasia on tissue sections.** *Anal Quant Cytol Histol.* 1990; **12**:366-72. | [Article](#) | [PubMed](#)
90. Bibbo M, Galera-Davidson H, Dytch HE, Lerma-Puertas E, Bartels PH and Wied G. **Quantitative contextual karyometry in prostate carcinoma.** In:Karr JP, Coffey DS, Gardner W (Eds.), *Prognostic cytometry and cytopathology of prostate cancer* 1989; 200-217.
91. Waehre H, Amellem O, Stenwig AE, Tvera K, Juul M, Pettersen EO and Fossa SD. **Deoxyribonucleic acid cytometry and histological findings before and after 125iodine implantation of primary prostate cancer.** *J Urol.* 1992; **148**:838-41. | [Article](#) | [PubMed](#)
92. Leistenschneider W and Nagel R. **Cytological and DNA-cytophotometric monitoring of the effect of therapy in conservatively treated prostatic carcinomas.** *Scand J Urol Nephrol Suppl.* 1980; **55**:197-204. | [PubMed](#)
93. Leistenschneider W and Nagel R. **Zellkern-DNA-Analyse an unbehandelten und behandelten Prostatakarzinomen mit Scanning-Einzelzell-Zytophotometrie.** *Akt. Urol.* 1979; **10**:353-358.
94. Kjaer TB, Thommesen P, Frederiksen P and Bichel P. **DNA content in cells aspirated from carcinoma of the prostate treated with oestrogenic compounds.** *Urol Res.* 1979; **7**:249-51. | [Article](#) | [PubMed](#)
95. O'Sullivan DC, Barrett DM, Colby TV, Lieber MM and Cupps RE. **Effect of external beam radiotherapy on prostatic carcinoma DNA content as measured by static image cytometry.** *Eur Urol.* 1992; **21**:235-9. | [PubMed](#)
96. Hussain MH, Powell I, Zaki N, Maciorowski Z, Sakr W, KuKuruga M, Visscher D, Haas GP, Pontes JE and Ensley JF. **Flow cytometric DNA analysis of fresh prostatic resections. Correlation with conventional prognostic parameters in patients with prostate cancer.** *Cancer.* 1993; **72**:3012-9. | [PubMed](#)
97. Amberson JB and Koss JG. **Measurements of DNA as a prognostic factor in prostatic carcinoma.** In:Karr JP, Coffey DS, Gardner W, (Eds.), *Prognostic cytometry and cytopathology of prostate cancer.* 1989; 281-286.
98. Benson MC, Ring K and Giella J. **Flow cytometry in carcinoma of the prostate.** *Urol Clin North Am.* 1990; **17**:885-91. | [Article](#) | [PubMed](#)
99. Tribukait B, Ronstrom L and Esposti PL. **Quantitative and qualitative aspects of flow DNA measurements related to the cytologic grade in prostatic carcinoma.** *Anal Quant Cytol.* 1983; **5**:107-11. | [Article](#) | [PubMed](#)
100. Lo J, Kerns BJ, Amling CL, Robertson CN and Layfield LJ. **Correlation of DNA ploidy and histologic diagnosis from prostate core-needle biopsies: is DNA ploidy more sensitive than histology for the diagnosis of carcinoma in small specimens?** *J Surg Oncol.* 1996; **63**:41-5. | [PubMed](#)
101. DeVere White R and Deitch AD. **Classification of prostate cells by DNA-flow cytometry.** In:Karr JP, Coffey DS, Gardner W (Eds.), *Prognostic cytometry and cytopathology of prostate cancer* 1989; 188-199.
102. Lee F, Badalament RA, Hu C, Bousho I and Tsodikov A. **Prostate cancers detected during 5alpha-reductase inhibitor use are smaller, differentiated, but confined when compared to controls.** *J Cancer.* 2012; **3**:122-8. | [Article](#) | [PubMed Abstract](#) | [PubMed Full Text](#)
103. Habib FK, Bissas A, Neill WA, Busuttill A and Chisholm GD. **Flow cytometric analysis of cellular DNA in human prostate cancer: relationship to 5 alpha-reductase activity of the tissue.** *Urol Res.* 1989; **17**:239-43. | [PubMed](#)
104. Nativ O, Myers RP, Farrow GM, Therneau TM, Zincke H and Lieber MM. **Nuclear deoxyribonucleic acid ploidy and serum prostate specific antigen in operable prostatic adenocarcinoma.** *J Urol.* 1990; **144**:303-6. | [Article](#) | [PubMed](#)
105. LeRiche JC, Bruchovsky N, Goldenberg SL and de Jong G. **Flow cytometry in the cytological and clinical assessment of prostatic carcinoma.** In:Karr JP, Coffey DS, Gardner W (Eds.), *Prognostic cytometry and cytopathology of prostate cancer.* 1989; 254-259.
106. Dejter SW, Jr., Cunningham RE, Noguchi PD, Jones RV, Moul JW, McLeod DG and Lynch JH. **Prognostic significance of DNA ploidy in carcinoma of prostate.** *Urology.* 1989; **33**:361-6. | [Article](#) | [PubMed](#)
107. Currin SM, Lee SE and Walther PJ. **Flow cytometric analysis of comedocarcinoma of the prostate: an uncommon histopathological variant of prostatic adenocarcinoma.** *J Urol.* 1988; **140**:96-100. | [Article](#) | [PubMed](#)
108. Willumsen H, Thorup J, Norgaard T and Hansen OH. **Nuclear DNA content in prostatic carcinoma measured by flow cytometry: a retrospective study on paraffin-embedded tissue.** *APMIS Suppl.* 1988; **4**:120-5. | [PubMed](#)
109. Ekman P, Svennerus K, Zetterberg A and Gustafsson JA.

- Cytophotometric DNA analysis and steroid receptor content in human prostatic carcinoma.** *Scand. J. Urol. Nephrol.* 1981; **60**Suppl:85-88.
110. Tribukait B. **Tumor biology in diagnostic cytology: DNA cytometry in carcinomas of the bladder and prostate.** *Recent Results Cancer Res.* 1993; **133**:23-31. | [Article](#) | [PubMed](#)
111. Falkmer UG. **Methodologic sources of errors in image and flow cytometric DNA assessments of the malignancy potential of prostatic carcinoma.** *Hum Pathol.* 1992; **23**:360-7. | [Article](#) | [PubMed](#)
112. Falkmer UG. **Methodological aspects on flow and image cytometric nuclear DNA assessments in prostatic adenocarcinoma.** *Acta Oncol.* 1991; **30**:201-3. | [Article](#) | [PubMed](#)
113. Stenkvist B and Johansson-Brownen I. **Image analysis cytology for DNA determination in breast and prostate cancer.** *Acta Oncol.* 1991; **30**:911-6. | [Article](#) | [PubMed](#)
114. Benson MC, Karp F and Tobin MS. **Multiparametric flow cytometric analysis of prostate cancer.** In Karr JP, Coffey DS, Gardner W (Eds.), **Prognostic cytometry and cytopathology of prostate cancer.** 1989; 243-253.
115. Coon JS and Weinstein RS. **Cellular DNA content in archival, paraffin-embedded prostate carcinoma specimens.** In Karr JP, Coffey DS, Gardner (Eds.), **Prognostic cytometry and cytopathology of prostate cancer.** 1989; 218-229.
116. Freudenberg N, Guzman J, Maier A, Pfänder R and Korth K. **Cytology and DNA-cytometry of carcinoma of the prostate.** *MD-GKB.* 1989; **55**:74-77.
117. Klein FA, Ratliff JE and White FK. **DNA distribution patterns of prostatic tissue obtained at time of transurethral resection.** *Urology.* 1988; **31**:260-5. | [Article](#) | [PubMed](#)
118. Benson MC and Walsh PC. **The application of flow cytometry to the assessment of tumor cell heterogeneity and the grading of human prostatic cancer: preliminary results.** *J Urol.* 1986; **135**:1194-8. | [Article](#) | [PubMed](#)
119. Seppelt U, Sprenger E and Hedderich J. **Investigation of automated DNA diagnosis and grading of prostatic cancer.** *Anal Quant Cytol Histol.* 1986; **8**:152-7. | [Article](#) | [PubMed](#)
120. Schultz RE, Varello MA, Tsou KC, Wein AJ and Murphy JJ. **Simultaneous flow cytometric deoxyribonucleic acid and acid phosphatase analysis of benign and malignant lesions of the prostate.** *J Urol.* 1985; **134**:1133-6. | [Article](#) | [PubMed](#)
121. Auer G and Zetterberg A. **The prognostic significance of nuclear DNA content in malignant tumors of breast, prostate, and cartilage.** In Koss LG, Coleman DV (Eds.): **Advances in Clinical Cytology** 1984; 123-134.
122. Muntzing J. **DNA determinations for prognosis and therapy control in prostatic cancer.** *Semin Oncol.* 1983; **10**:16-20. | [PubMed](#)
123. Leistenschneider W and Nagel R. **Einzelzellzytometrische Zellkern-DNS-Analysen beim behandelten, entdifferenzierten Prostatakarzinom und ihre klinische Bedeutung.** *Urologe A.* 1983; **22**:157-161.
124. Zimmerman A, Truss F, Blech M, Schröter W and Barth M. **Bedeutung der Impulszytometrie für Diagnose und Prognose des Prostatakarzinoms.** *Urologe A.* 1983; **22**:151-156.
125. Lämmel A, Roters M, Kastendieck H and Becker H. **Flußzytometrische Bestimmung von DNA-Verteilungsmustern in malignen und benignen Prostatatumoren.** *Urologe A.* 1981; **20**:400-404.
126. Ronström L, Tribukait B and Esposti PL. **DNA pattern and cytological findings in fine-needle aspirates of untreated prostatic tumors. A flow-cytofluorometric study.** *Prostate.* 1981; **2**:79-88. | [Article](#) | [PubMed](#)
127. Tribukait B, Esposti PL and Ronström L. **Tumour ploidy for characterization of prostatic carcinoma: flow-cytofluorometric DNA studies using aspiration biopsy material.** *Scand J Urol Nephrol Suppl.* 1980; **55**:59-64. | [PubMed](#)
128. Frederiksen P, Thommesen P, Kjaer TB and Bichel P. **Flow cytometric DNA analysis in fine needle aspiration biopsies from patients with prostatic lesions. Diagnostic value and relation to clinical stages.** *Acta Pathol Microbiol Scand A.* 1978; **86A**:461-4. | [Article](#) | [PubMed](#)
129. Zimmerman A and Truss F. **Vergleichende zytologische und impulszytometrische Untersuchungen an Prostatazellen.** *Urologe A.* 1978; **17**:391-394.
130. Bichel P, Frederiksen P, Kjaer T, Thommesen P and Vindelov LL. **Flow microfluorometry and transrectal fine-needle biopsy in the classification of human prostatic carcinoma.** *Cancer.* 1977; **40**:1206-11. | [Article](#) | [PubMed](#)
131. Goerttler K, Ehemann V, Tschahargane C and Stoehr M. **Monodispersal and deoxyribonucleic acid analysis of prostatic cell nuclei.** *J Histochem Cytochem.* 1977; **25**:560-4. | [Article](#) | [PubMed](#)
132. Sprenger E, Michaelis WE, Vogt-Schaden M and Otto C. **The significance of DNA flow-through fluorescence cytophotometry for the diagnosis of prostate carcinoma.** *Beitr Pathol.* 1976; **159**:292-8. | [Article](#) | [PubMed](#)
133. Zetterberg A and Esposti PL. **Cytophotometric DNA-analysis of aspirated cells from prostatic carcinoma.** *Acta Cytol.* 1976; **20**:46-57. | [PubMed](#)
134. Sprenger E, Volk L and Michaelis WE. **[The significance of nuclear DNA-measurements in the diagnosis of prostatic carcinomas (author's transl)].** *Beitr Pathol.* 1974; **153**:370-8. | [PubMed](#)
135. Krause FS, Feil G, Bichler KH, Schrott KM, Akcetin ZY and Engehausen DG. **Heterogeneity in prostate cancer: prostate specific antigen (PSA) and DNA cytophotometry.** *Anticancer Res.* 2005; **25**:1783-5. | [Article](#) | [PubMed](#)
136. Bahn DK, Silverman P, Lee F, Sr., Badalament R, Bahn ED and Rewcastle JC. **In treating localized prostate cancer the efficacy of cryoablation is independent of DNA ploidy type.** *Technol Cancer Res Treat.* 2004; **3**:253-7. | [Article](#) | [PubMed](#)
137. Buhmeida A, Kuopio T and Collan Y. **Influence of sampling practices on the appearance of DNA image histograms of prostate cells in FNAB samples.** *Anal Cell Pathol.* 1999; **18**:95-102. | [PubMed](#)
138. Coetzee LJ, Layfield LJ, Hars V and Paulson DF. **Proliferative index determination in prostatic carcinoma tissue: is there any additional prognostic value greater than that of Gleason score, ploidy and pathological stage?** *J Urol.* 1997; **157**:214-8. | [Article](#) | [PubMed](#)
139. Kugler A, Gross AJ, Zoller G, Hemmerlein B, Kallerhoff M and Ringert RH. **[Influence of DNA ploidy and grading on survival in primary metastatic prostate carcinoma].** *Urologe A.* 1997; **36**:138-42. | [Article](#) | [PubMed](#)
140. Konchuba AM, Schellhammer PF, Kolm P, Clements MA and Wright GL, Jr. **Deoxyribonucleic acid cytometric analysis of prostate core biopsy specimens: relationship to serum prostate specific antigen and prostatic acid phosphatase, clinical stage and histopathology.** *J Urol.* 1993; **150**:115-9. | [Article](#) | [PubMed](#)
141. Jones EC, McNeal J, Bruchovsky N and de Jong G. **DNA content in prostatic adenocarcinoma. A flow cytometry study of the predictive value of aneuploidy for tumor volume, percentage Gleason grade 4 and 5, and lymph node metastases.** *Cancer.* 1990; **66**:752-7. | [Article](#) | [PubMed](#)
142. Ritchie AW, Dorey F, Layfield LJ, Hannah J, Lovrekovich H and deKernion JB. **Relationship of DNA content to conventional prognostic factors in clinically localized carcinoma of the prostate.** *Br J Urol.* 1988; **62**:245-60. | [Article](#) | [PubMed](#)
143. Sengupta S, Cheville JC, Lohse CM, Zincke H, Myers RP, Riehle DL, Pankratz VS, Blute ML and Sebo TJ. **Conventional assessment of needle biopsy specimens is more useful than digital image analysis of proliferation and DNA ploidy in prediction of positive surgical margins at radical prostatectomy.** *Urology.* 2006; **68**:94-8. | [Article](#) | [PubMed](#)
144. DiMarco DS, Blute ML, Zincke H, Cheville JC, Riehle DL, Lohse CM, Pankratz VS and Sebo TJ. **Multivariate models to predict clinically important outcomes at prostatectomy for patients with organ-confined disease and needle biopsy Gleason scores of 6 or less.** *Urol Oncol.* 2003; **21**:439-46. | [Article](#) | [PubMed](#)
145. Sebo TJ, Cheville JC, Riehle DL, Lohse CM, Pankratz VS, Myers RP, Blute ML and Zincke H. **Predicting prostate carcinoma volume and stage at radical prostatectomy by assessing needle biopsy specimens for**

- percent surface area and cores positive for carcinoma, perineural invasion, Gleason score, DNA ploidy and proliferation, and preoperative serum prostate specific antigen: a report of 454 cases. *Cancer*. 2001; **91**:2196-204. | [Article](#) | [PubMed](#)
146. Ring KS, Karp FS, Olsson CA, O'Toole K, Bixon R and Benson MC. **Flow cytometric analysis of localized adenocarcinoma of the prostate: the use of archival DNA analysis in conjunction with pathological grading to predict clinical outcome following radical retropubic prostatectomy.** *Prostate*. 1990; **17**:155-64. | [Article](#) | [PubMed](#)
147. Seay TM, Blute ML and Zincke H. **Long-term outcome in patients with pTxN+ adenocarcinoma of prostate treated with radical prostatectomy and early androgen ablation.** *J Urol*. 1998; **159**:357-64. | [Article](#) | [PubMed](#)
148. Milcent S, Lorenzato M, Enaschescu D, Enaschescu C, Birembaut P and Staerman. **La ploïdie cellulaire: facteur prédictif de cancer de prostate localement avancé.** *Progr. Urol*. 2007; **17**:819-823.
149. Gundorova LV, Avtandilov GG, Saniev KB and Zairat'iants OV. **[Morphometric diagnostics of the prostate precancer and cancer by examination of ploidy].** *Arkh Patol*. 2003; **65**:46-50. | [PubMed](#)
150. Martinez Jabaloyas JM, Ruiz Cerda JL, Sanz Chinesta S, Jimenez A, Hernandez M and Jimenez Cruz JF. **[Prognostic value of DNA ploidy in prostatic cancer].** *Actas Urol Esp*. 2001; **25**:283-90. | [Article](#) | [PubMed](#)
151. Danielsen HE, Kildal W and Sudbo J. **[Digital image analysis in pathology—exemplified in prostatic cancer].** *Tidsskr Nor Laegeforen*. 2000; **120**:479-88. | [Article](#) | [PubMed](#)
152. Ishikawa A. **[The clinical usefulness of flow cytometric DNA analysis in prostatic cancer].** *Hinyokika Kyo*. 1992; **38**:665-70. | [Article](#) | [PubMed](#)
153. Piaton E, Bringuier PP, Devonec M, Seigneurin D and Perrin P. **[Analysis of tumor DNA by flow cytometry on prostate cyto-aspiration product. Value of routine cytologic evaluation].** *Pathol Biol (Paris)*. 1991; **39**:182-4. | [Article](#) | [PubMed](#)
154. Piaton E, Bringuier PP, Seigneurin D, Perrin P and Devonec M. **[Heterogeneity of nucleolar distribution in prostatic cancer. Comparison with the cytological grade and DNA content].** *Bull Cancer*. 1991; **78**:935-41. | [PubMed](#)
155. Sahin AA, Ro JY, El-Naggar AK, Ordonez NG, Babaian RJ and Ayala AG. **Pseudosarcomatous fibromyxoid tumor of the prostate.** *Am. J. Clin. Pathol*. 1991; **96**:253-258.
156. Howell LP and Teplitz RL. **Papillary carcinoma of prostatic ductal origin: a cytologic case report with immunohistochemical and quantitative DNA correlation.** *Diagn Cytopathol*. 1989; **5**:211-6. | [Article](#) | [PubMed](#)
157. Leistenschneider W. **Cytophotometric DNA analysis as indicator of therapeutic responsiveness.** In: Karr JP, Coffey DS, Gardner W: **Prognostic cytometry and cytopathology of prostate cancer.** 1989; 266-280.
158. Lundgren R, Hartley-Asp B and Henriksson H. **Fine needle biopsy as a method for following ploidy changes in the Dunning R-3327 rat prostate tumour.** *In Vivo*. 1988; **2**:313-6. | [PubMed](#)
159. Collins JM, Bagwell CB, Block NL, Claffin AJ, Irvin GL, 3rd, Pollack A and Stover B. **Flow cytometric monitoring of R 3327 rat prostate carcinoma.** *Invest Urol*. 1981; **19**:8-13. | [Article](#) | [PubMed](#)
160. Robertson CN and Paulson DF. **DNA in radical prostatectomy specimens. Prognostic value of tumor ploidy.** *Acta Oncol*. 1991; **30**:205-7. | [Article](#) | [PubMed](#)
161. Nativ O and Lieber MM. **Prostatic carcinoma: Prognostic importance of static and flow cytometric nuclear DNA ploidy measurements.** *Am. Urol. Assoc*. 1991; **23**:178-183.
162. Sassi I, Mangili F, Sanvito F, Andreassi A and Cantaboni A. **Reproducibility of FCM-DNA ploidy analysis in prostatic cancer: comparison between needle biopsy and surgical specimens.** *Anal Cell Pathol*. 1993; **5**:17-21. | [Article](#) | [PubMed](#)
163. Nagel R and al Abadi H. **The prognostic significance of ploidy and DNA-heterogeneity in the primary diagnosis and monitoring of patients with locally advanced prostatic carcinoma.** *Scand J Urol Nephrol Suppl*. 1991; **138**:83-92. | [Pdf](#) | [PubMed](#)
164. Fossa SD, Berner A, Waehre H, Heiden T, Juul ME, van den Ouden D, Pettersen EO, Wang N and Tribukait B. **DNA ploidy in cell nuclei from paraffin-embedded material—comparison of results from two laboratories.** *Cytometry*. 1992; **13**:395-403. | [PubMed](#)
165. Takai K, Goellner JR, Katzmann JA, Myers RP and Lieber MM. **Static and flow DNA cytometry of prostatic adenocarcinoma. Studies of needle biopsy and radical prostatectomy specimens.** *J. Urol. Pathol*. 1994; **2**:39-47.
166. Gettman MT, Bergstralh EJ, Blute M, Zincke H and Bostwick DG. **Prediction of patient outcome in pathologic stage T2 adenocarcinoma of the prostate: lack of significance for microvessel density analysis.** *Urology*. 1998; **51**:79-85. | [Article](#) | [PubMed](#)
167. Isharwal S, Miller MC, Epstein JI, Mangold LA, Humphreys E, Partin AW and Veltri RW. **DNA Ploidy as surrogate for biopsy gleason score for preoperative organ versus nonorgan-confined prostate cancer prediction.** *Urology*. 2009; **73**:1092-7. | [Article](#) | [PubMed Abstract](#) | [PubMed Full Text](#)
168. Brinker DA, Ross JS, Tran TA, Jones DM and Epstein JI. **Can ploidy of prostate carcinoma diagnosed on needle biopsy predict radical prostatectomy stage and grade?** *J Urol*. 1999; **162**:2036-9. | [Article](#) | [PubMed](#)
169. Vesalainen S, Nordling S, Lipponen P, Talja M and Syrjänen K. **Progression and survival in prostatic adenocarcinoma: a comparison of clinical stage, Gleason grade, S-phase fraction and DNA ploidy.** *Br J Cancer*. 1994; **70**:309-14. | [Article](#) | [PubMed Abstract](#) | [PubMed Full Text](#)
170. Ross JS, Figge H, Bui HX, del Rosario AD, Jennings TA, Rifkin MD and Fisher HA. **Prediction of pathologic stage and postprostatectomy disease recurrence by DNA ploidy analysis of initial needle biopsy specimens of prostate cancer.** *Cancer*. 1994; **74**:2811-8. | [PubMed](#)
171. Greene DR, Rogers E, Wessels EC, Wheeler TM, Taylor SR, Santucci RA, Thompson TC and Scardino PT. **Some small prostate cancers are nondiploid by nuclear image analysis: correlation of deoxyribonucleic acid ploidy status and pathological features.** *J Urol*. 1994; **151**:1301-7. | [Article](#) | [PubMed](#)
172. Haggman M, de la Torre M, Brandstedt S, Norlen BJ, Norberg M and Busch C. **Pre- and postoperative DNA ploidy patterns correlated to pT-stage, histological grade and tumour volume in total prostatectomy specimens.** *Scand J Urol Nephrol*. 1994; **28**:59-66. | [Article](#) | [PubMed](#)
173. Ross JS, Figge HL, Bui HX, del Rosario AD, Fisher HA, Nazeer T, Jennings TA, Ingle R and Kim DN. **E-cadherin expression in prostatic carcinoma biopsies: correlation with tumor grade, DNA content, pathologic stage, and clinical outcome.** *Mod Pathol*. 1994; **7**:835-41. | [Article](#) | [PubMed](#)
174. Badalament RA, O'Toole RV, Young DC and Drago JR. **DNA ploidy and prostate-specific antigen as prognostic factors in clinically resectable prostate cancer.** *Cancer*. 1991; **67**:3014-23. | [Pdf](#) | [PubMed](#)
175. Bantis A, Patsouris E, Gonidi M, Kavantzias N, Tsipis A, Athanassiadou AM, Aggelonidou E and Athanassiadou P. **Telomerase RNA expression and DNA ploidy as prognostic markers of prostate carcinomas.** *Tumori*. 2009; **95**:744-52. | [Pdf](#) | [PubMed](#)
176. Bantis A, Gonidi M, Athanassiades P, Tsolos C, Liossi A, Aggelonidou E, Athanassiadou AM, Petrakakou E and Athanassiadou P. **Prognostic value of DNA analysis of prostate adenocarcinoma: correlation to clinicopathologic predictors.** *J Exp Clin Cancer Res*. 2005; **24**:273-8. | [Pdf](#) | [PubMed](#)
177. Deliveliotis C, Skolarikos A, Karayannis A, Tzelepis V, Trakas N, Alargof E and Protopogerou V. **The prognostic value of p53 and DNA ploidy following radical prostatectomy.** *World J Urol*. 2003; **21**:171-6. | [Article](#) | [PubMed](#)
178. Amling CL, Lerner SE, Martin SK, Slezak JM, Blute ML and Zincke H. **Deoxyribonucleic acid ploidy and serum prostate specific antigen predict outcome following salvage prostatectomy for radiation refractory prostate cancer.** *J Urol*. 1999; **161**:857-62. | [Article](#) | [PubMed](#)
179. Gettman MT, Pacelli A, Slezak J, Bergstralh EJ, Blute M, Zincke H and Bostwick DG. **Role of microvessel density in predicting recurrence in**

- pathologic Stage T3 prostatic adenocarcinoma. *Urology*. 1999; **54**:479-85. | [Article](#) | [PubMed](#)
180. Mora LB, Moscinski LC, Diaz JJ, Blair P, Cantor AB and Pow-Sang JM. **Stage B prostate cancer: Correlation of DNA ploidy analysis with histological and clinical parameters.** *Cancer Control*. 1999; **6**:587-591. | [Pdf](#) | [PubMed](#)
181. Lerner SE, Blute ML, Bergstralh EJ, Bostwick DG, Eickholt JT and Zincke H. **Analysis of risk factors for progression in patients with pathologically confined prostate cancers after radical retropubic prostatectomy.** *J Urol*. 1996; **156**:137-43. | [Article](#) | [PubMed](#)
182. Zincke H, Bergstralh EJ, Larson-Keller JJ, Farrow GM, Myers RP, Lieber MM, Barrett DM, Rife CC and Gonchoroff NJ. **Stage D1 prostate cancer treated by radical prostatectomy and adjuvant hormonal treatment. Evidence for favorable survival in patients with DNA diploid tumors.** *Cancer*. 1992; **70**:311-23. | [Article](#) | [PubMed](#)
183. Wirth MP, Muller HA, Manseck A, Muller J and Frohmuller HG. **Value of nuclear DNA ploidy patterns in patients with prostate cancer after radical prostatectomy.** *Eur Urol*. 1991; **20**:248-52. | [PubMed](#)
184. Nativ O, Winkler HZ, Raz Y, Therneau TM, Farrow GM, Myers RP, Zincke H and Lieber MM. **Stage C prostatic adenocarcinoma: flow cytometric nuclear DNA ploidy analysis.** *Mayo Clin Proc*. 1989; **64**:911-9. | [Article](#) | [PubMed](#)
185. Blute ML, Nativ O, Zincke H, Farrow GM, Therneau T and Lieber MM. **Pattern of failure after radical retropubic prostatectomy for clinically and pathologically localized adenocarcinoma of the prostate: influence of tumor deoxyribonucleic acid ploidy.** *J Urol*. 1989; **142**:1262-5. | [Pdf](#) | [PubMed](#)
186. Winkler HZ, Rainwater LM, Myers RP, Farrow GM, Therneau TM, Zincke H and Lieber MM. **Stage D1 prostatic adenocarcinoma: significance of nuclear DNA ploidy patterns studied by flow cytometry.** *Mayo Clin Proc*. 1988; **63**:103-12. | [Article](#) | [PubMed](#)
187. Hawkins CA, Bergstralh EJ, Lieber MM and Zincke H. **Influence of DNA ploidy and adjuvant treatment on progression and survival in patients with pathologic stage T3 (PT3) prostate cancer after radical retropubic prostatectomy.** *Urology*. 1995; **46**:356-64. | [Article](#) | [PubMed](#)
188. Carmichael MJ, Veltri RW, Partin AW, Miller MC, Walsh PC and Epstein JI. **Deoxyribonucleic acid ploidy analysis as a predictor of recurrence following radical prostatectomy for stage T2 disease.** *J Urol*. 1995; **153**:1015-9. | [Article](#) | [PubMed](#)
189. Voges GE, Eigner EB, Ross W, Sussman H, Stockle M, Freiha FS and Stamey TA. **Pathologic parameters and flow cytometric ploidy analysis in predicting recurrence in carcinoma of the prostate.** *Eur Urol*. 1993; **24**:132-9. | [PubMed](#)
190. Montgomery BT, Nativ O, Blute ML, Farrow GM, Myers RP, Zincke H, Therneau TM and Lieber MM. **Stage B prostate adenocarcinoma. Flow cytometric nuclear DNA ploidy analysis.** *Arch Surg*. 1990; **125**:327-31. | [Article](#) | [PubMed](#)
191. Lee SE, Currin SM, Paulson DF and Walther PJ. **Flow cytometric determination of ploidy in prostatic adenocarcinoma: a comparison with seminal vesicle involvement and histopathological grading as a predictor of clinical recurrence.** *J Urol*. 1988; **140**:769-74. | [Article](#) | [PubMed](#)
192. Veltri RW, Partin AW, Epstein JE, Marley GM, Miller CM, Singer DS, Patton KP, Criley SR and Coffey DS. **Quantitative nuclear morphometry, Markovian texture descriptors, and DNA content captured on a CAS-200 Image analysis system, combined with PCNA and HER-2/neu immunohistochemistry for prediction of prostate cancer progression.** *J Cell Biochem Suppl*. 1994; **19**:249-58. | [PubMed](#)
193. Centeno BA, Zietman AL, Shipley WU, Sobczak ML, Shipley JW, Preffer FI, Boyle BJ and Colvin RB. **Flow cytometric analysis of DNA ploidy, percent S-phase fraction, and total proliferative fraction as prognostic indicators of local control and survival following radiation therapy for prostate carcinoma.** *Int J Radiat Oncol Biol Phys*. 1994; **30**:309-15. | [Article](#) | [PubMed](#)
194. Khoo VS, Pollack A, Cowen D, Joon DL, Patel N, Terry NH, Zagars GK, von Eschenbach AC, Meistrich ML and Troncso P. **Relationship of Ki-67 labeling index to DNA-ploidy, S-phase fraction, and outcome in prostate cancer treated with radiotherapy.** *Prostate*. 1999; **41**:166-72. | [Article](#) | [PubMed](#)
195. Pollack A, Zagars GK, el-Naggar AK, Gauwitz MD and Terry NH. **Near-diploidy: a new prognostic factor for clinically localized prostate cancer treated with external beam radiation therapy.** *Cancer*. 1994; **73**:1895-903. | [Pdf](#) | [PubMed](#)
196. Stege R, Tribukait B, Lundh B, Carlstrom K, Pousette A and Hasenson M. **Quantitative estimation of tissue prostate specific antigen, deoxyribonucleic acid ploidy and cytological grade in fine needle aspiration biopsies for prognosis of hormonally treated prostatic carcinoma.** *J Urol*. 1992; **148**:833-7. | [Article](#) | [PubMed](#)
197. Adolfsson J and Tribukait B. **Evaluation of tumor progression by repeated fine needle biopsies in prostate adenocarcinoma: modal deoxyribonucleic acid value and cytological differentiation.** *J Urol*. 1990; **144**:1408-10. | [Article](#) | [PubMed](#)
198. Ward JF, Slezak JM, Blute ML, Bergstralh EJ and Zincke H. **Radical prostatectomy for clinically advanced (cT3) prostate cancer since the advent of prostate-specific antigen testing: 15-year outcome.** *BJU Int*. 2005; **95**:751-6. | [Article](#) | [PubMed](#)
199. Martinez Jabaloyas JM, Jimenez Sanchez A, Ruiz Cerda JL, Sanz Chinesta S, Sempere A and Jimenez Cruz JF. **[Prognostic value of DNA ploidy and nuclear morphometry in metastatic prostate cancer].** *Actas Urol Esp*. 2004; **28**:298-307. | [Article](#) | [PubMed](#)
200. Myers RP, Larson-Keller JJ, Bergstralh EJ, Zincke H, Oesterling JE and Lieber MM. **Hormonal treatment at time of radical retropubic prostatectomy for stage D1 prostate cancer: results of long-term followup.** *J Urol*. 1992; **147**:910-5. | [Article](#) | [PubMed](#)
201. Di Silverio F, D'Eramo G, Caponera M, Persechino F, Eleuteri P, Cavallo D, De Vita R and Forte D. **The prognostic value of DNA content in patients with prostatic carcinoma.** *Eur Urol*. 1992; **21** Suppl 1:92-5. | [PubMed](#)
202. Bratt O, Anderson H, Bak-Jensen E, Baldetorp B and Lundgren R. **Metaphase cytogenetics and DNA flow cytometry with analysis of S-phase fraction in prostate cancer: influence on prognosis.** *Urology*. 1996; **47**:218-24. | [Article](#) | [PubMed](#)
203. Tinari N, Natoli C, Angelucci D, Tenaglia R, Fiorentino B, Di Stefano P, Amatetti C, Zezza A, Nicolai M and Iacobelli S. **DNA and S-phase fraction analysis by flow cytometry in prostate cancer. Clinicopathologic implications.** *Cancer*. 1993; **71**:1289-96. | [Article](#) | [PubMed](#)
204. Miller J, Horsfall DJ, Marshall VR, Rao DM and Leong SY. **The prognostic value of deoxyribonucleic acid flow cytometric analysis in stage D2 prostatic carcinoma.** *J Urol*. 1991; **145**:1192-6. | [Article](#) | [PubMed](#)
205. Pollack A, Grignon DJ, Heydon KH, Hammond EH, Lawton CA, Mesic JB, Fu KK, Porter AT, Abrams RA and Shipley WU. **Prostate cancer DNA ploidy and response to salvage hormone therapy after radiotherapy with or without short-term total androgen blockade: an analysis of RTOG 8610.** *J Clin Oncol*. 2003; **21**:1238-48. | [Article](#) | [PubMed](#)
206. Song J, Cheng WS, Cupps RE, Earle JD, Farrow GM and Lieber MM. **Nuclear deoxyribonucleic acid content measured by static cytometry: important prognostic association for patients with clinically localized prostate carcinoma treated by external beam radiotherapy.** *J Urol*. 1992; **147**:794-7. | [Article](#) | [PubMed](#)
207. Stephenson RA, James BC, Gay H, Fair WR, Whitmore WF, Jr and Melamed MR. **Flow cytometry of prostate cancer: relationship of DNA content to survival.** *Cancer Res*. 1987; **47**:2504-7. | [Article](#) | [PubMed](#)
208. Martinez-Jabaloyas JM, Ruiz-Cerda JL, Hernandez M, Jimenez A and Jimenez-Cruz F. **Prognostic value of DNA ploidy and nuclear morphometry in prostate cancer treated with androgen deprivation.** *Urology*. 2002; **59**:715-20. | [Article](#) | [PubMed](#)
209. Pollack A, Troncso P, Zagars GK, von Eschenbach AC, Mak AC, Wu CS and Terry NH. **The significance of DNA-ploidy and S-phase fraction in node-positive (stage D1) prostate cancer treated with androgen ablation.** *Prostate*. 1997; **31**:21-8. | [Article](#) | [PubMed](#)
210. Ahlgren G, Lindholm K, Falkmer U and Abrahamsson PA. **A DNA cytometric proliferation index improves the value of the DNA ploidy pattern as a prognosticating tool in patients with carcinoma of the prostate.** *Urology*. 1997; **50**:379-84. | [Article](#) | [PubMed](#)

211. Forsslund G, Nilsson B and Zetterberg A. **Near tetraploid prostate carcinoma. Methodologic and prognostic aspects.** *Cancer.* 1996; **78**:1748-55. | [Pdf](#) | [PubMed](#)
212. Jorgensen T, Yogesani K, Skjorten F, Berner A, Tvetter KJ and Danielsen HE. **Histopathological grading and DNA ploidy as prognostic markers in metastatic prostatic cancer.** *Br J Cancer.* 1995; **71**:1055-60. | [Article](#) | [PubMed Abstract](#) | [PubMed Full Text](#)
213. Al-Abadi H and Nagel R. **Nuclear DNA analysis: DNA heterogeneity in the monitoring of patients with locally advanced prostatic carcinoma.** *Eur Urol.* 1992; **22**:303-10. | [PubMed](#)
214. Van den Ouden D, Tribukait B, Blom JH, Fossa SD, Kurth KH, ten Kate FJ, Heiden T, Wang N and Schroder FH. **Deoxyribonucleic acid ploidy of core biopsies and metastatic lymph nodes of prostate cancer patients: impact on time to progression. The European Organization for Research and Treatment of Cancer Genitourinary Group.** *J Urol.* 1993; **150**:400-6. | [PubMed](#)
215. Di Silverio F, D'Eramo G, Buscarini M, Sciarra A, Casale P, Di Nicola S, Loreto A, Seccareccia F and De Vita R. **DNA ploidy, Gleason score, pathological stage and serum PSA levels as predictors of disease-free survival in C-D1 prostatic cancer patients submitted to radical retropubic prostatectomy.** *Eur Urol.* 1996; **30**:316-21. | [PubMed](#)
216. Forsslund G, Esposti PL, Nilsson B and Zetterberg A. **The prognostic significance of nuclear DNA content in prostatic carcinoma.** *Cancer.* 1992; **69**:1432-9. | [Article](#) | [PubMed](#)
217. Fordham MV, Burdge AH, Matthews J, Williams G and Cooke T. **Prostatic carcinoma cell DNA content measured by flow cytometry and its relation to clinical outcome.** *Br J Surg.* 1986; **73**:400-3. | [Article](#) | [PubMed](#)
218. Tribukait B. **DNA flow cytometry in carcinoma of the prostate for diagnosis, prognosis and study of tumor biology.** *Acta Oncol.* 1991; **30**:187-92. | [Article](#) | [PubMed](#)
219. Borre M, Hoyer M, Nerstrom B and Overgaard J. **DNA ploidy and survival of patients with clinically localized prostate cancer treated without intent to cure.** *Prostate.* 1998; **36**:244-9. | [Article](#) | [PubMed](#)
220. Tavares AS, Costa J and Maia JC. **Correlation between ploidy and prognosis in prostatic carcinoma.** *J Urol.* 1973; **109**:676-9. | [Article](#) | [PubMed](#)
221. Martinez Jabaloyas JM, Jimenez Sanchez A, Ruiz Cerda JL, Sanz Chinesta S, Sempere A and Jimenez Cruz JF. **[Prognostic value of DNA ploidy and nuclear morphometry in metastatic prostate cancer].** *Actas Urol Esp.* 2004; **28**:298-307. | [Article](#) | [PubMed](#)
222. Blute ML, Bostwick DG, Bergstralh EJ, Slezak JM, Martin SK, Amling CL and Zincke H. **Anatomic site-specific positive margins in organ-confined prostate cancer and its impact on outcome after radical prostatectomy.** *Urology.* 1997; **50**:733-9. | [Article](#) | [PubMed](#)
223. Keyes M, Macaulay C, Hayes M, Korbek J, Morris WJ and Palcic B. **DNA ploidy measured on archived pretreatment biopsy material may correlate with prostate-specific antigen recurrence after prostate brachytherapy.** *Int J Radiat Oncol Biol Phys.* 2013; **86**:829-34. | [Article](#) | [PubMed](#)
224. Isharwal S, Miller MC, Epstein JI, Mangold LA, Humphreys E, Partin AW and Veltri RW. **DNA Ploidy as surrogate for biopsy Gleason score for preoperative organ versus nonorgan-confined prostate cancer prediction.** *Urology.* 2009; **73**:1092-7. | [Article](#) | [PubMed Abstract](#) | [PubMed Full Text](#)
225. Ross JS, Sheehan CE, Ambros RA, Nazeer T, Jennings TA, Kaufman RP, Jr., Fisher HA, Rifkin MD and Kallakury BV. **Needle biopsy DNA ploidy status predicts grade shifting in prostate cancer.** *Am J Surg Pathol.* 1999; **23**:296-301. | [Article](#) | [PubMed](#)
226. Nielsen K, Overgaard J, Bentzen SM and Bruun E. **Histological grade, DNA ploidy and mean nuclear volume as prognostic factors in prostatic cancer.** *APMIS.* 1993; **101**:614-20. | [Article](#) | [PubMed](#)
227. Eskelinen M, Lipponen P, Majapuro R, Syrjanen K and Nordling S. **DNA ploidy, S phase fraction and G2 fraction as prognostic determinants in prostatic adenocarcinoma.** *Eur Urol.* 1991; **20**:62-6. | [Pdf](#) | [PubMed](#)
228. O'Malley FP, Grignon DJ, Keeney M, Kerkvliet N and McLean C. **DNA heterogeneity in prostatic adenocarcinoma. A DNA flow cytometric mapping study with whole organ sections of prostate.** *Cancer.* 1993; **71**:2797-802. | [Article](#) | [PubMed](#)
229. Ross JS, Nazeer T, Church K, Amato C, Figge H, Rifkin MD and Fisher HA. **Contribution of HER-2/neu oncogene expression to tumor grade and DNA content analysis in the prediction of prostatic carcinoma metastasis.** *Cancer.* 1993; **72**:3020-8. | [Article](#) | [PubMed](#)
230. Leung CS, Zbieranowski I, Demers J and Murray D. **DNA image cytometry of prostatic carcinoma: a comparison of needle core biopsy and subsequent prostatectomy specimens.** *Mod Pathol.* 1994; **7**:195-9. | [Article](#) | [PubMed](#)
231. Wang N, Wilkin C, Böcking A and Tribukait B. **Evaluation of tumor heterogeneity of prostate carcinoma by flow- and image DNA cytometry and histopathological grading.** *Anal Cell Pathol.* 2000; **20**:49-62. | [PubMed](#)
232. Häggarth L, Auer G, Busch C, Norberg M, Haggman M and Egevad L. **The significance of tumor heterogeneity for prediction of DNA ploidy of prostate cancer.** *Scand J Urol Nephrol.* 2005; **39**:387-92. | [Article](#) | [PubMed](#)
233. Böcking A, Chatelain R, Orthen U, Gien G, von Kalkreuth G, Jocham D and Wohltmann D. **DNA-grading of prostatic carcinoma: prognostic validity and reproducibility.** *Anticancer Res.* 1988; **8**:129-35. | [PubMed](#)
234. Tribukait B. **Klinische Bedeutung der DNA-Durchflusszytometrie beim Prostatakarzinom.** In: Samsel W und Böcking A (Eds.), **Prognostische und therapeutische Bedeutung der DNA-Zytometrie beim Prostatakarzinom.** *Schriftenreihe zur Gesundheitsanalyse* 2006, Gmünder Ersatzkasse, **41**:115-133.
235. Tribukait B. **Nuclear deoxyribonucleic acid determination in patients with prostate carcinomas: clinical research and application.** *Eur Urol.* 1993; **23** Suppl 2:64-76. | [PubMed](#)
236. Esposti PL. **Cytologic malignancy grading of prostatic carcinoma by transrectal aspiration biopsy. A five-year follow-up study of 469 hormone-treated patients.** *Scand J Urol Nephrol.* 1971; **5**:199-209. | [Article](#) | [PubMed](#)

Citation:

Böcking A, Tils M, Schramm M, Dietz J and Biesterfeld S. **DNA-cytometric grading of prostate cancer systematic review with descriptive data analysis.** *Pathol Discov.* 2014; **2**:7.
<http://dx.doi.org/10.7243/2052-7896-2-7>